



## MEEKER-McLEOD-SIBLEY COMMUNITY HEALTH BOARD

Meeting Location: McLeod County Environmental Services at  
1065 5th Ave. SE, Hutchinson, MN 55350

March 9, 2023

9 AM to 11 AM

### Agenda

1. Meeting called to order
2. Approval of the Agenda (Action).....pg 1
3. Approval of November 10, 2022 Meeting Minutes\* (Action).....pg 3
4. Fiscal Management
  - a. Approval of Expense Report – Invoice payments\* (Action).....pg 5
    - i. November
    - ii. December
    - iii. January
  - b. Approval of Financial Statements – Fiscal Report\* (Action).....pg 8
    - i. November
    - ii. December
    - iii. January
  - c. Approval of Grant Summary Report\* (Action).....pg 14
    - i. November
    - ii. December
    - iii. January
5. Annual Business
  - i. Election of Chair, Vice Chair, Secretary (Action)
    1. Chair
    2. Vice Chair
    3. Secretary
  - ii. Agent of the Board Resolution\* (Action).....pg 33
  - iii. Bank Resolution\* (Action).....pg 34
  - iv. Conflict of Interest Policy\* (Action).....pg 35
  - v. Medical Consultant Resolution\* (Action).....pg 37
6. Administrative Items
  - i. Presentation of CHB Binders
  - ii. SCHSAC Report\* – Commissioner Schmalz.....pg 41
  - iii. Cell Phone Policy \* (Action).....pg 43
7. Other Agenda Items
  - a. SHIP Update\*.....pg 49
  - b. Fiscal Update\*.....pg 55
  - c. County Updates (McLeod, Sibley, Meeker)
  - d. CHS Administrator Update\*

Adjourn –

\*Attachments:

- Agenda
- November Minutes
- Expense Reports
- Fiscal Reports
- Grant Summary Reports
- Agent of the Board Resolution
- Bank Designation Resolution
- Conflict of Interest Policy
- Medical Director Contract
- SCHSAC
- Cell Phone Policy
- SHIP Highlights
- Fiscal Update
- CHS Administrator Updates

2023 Meeting Dates

March 9<sup>th</sup>

May 11<sup>th</sup>

July 13<sup>th</sup>

September 14<sup>th</sup>

November 9<sup>th</sup>

*All meetings are **9-11** unless otherwise specified*



## MEEKER-McLEOD-SIBLEY COMMUNITY HEALTH BOARD

Meeting Location: McLeod County Environmental Services at  
1065 5th Ave. SE, Hutchinson, MN 55350  
November 10, 2022  
9 AM to 11 AM  
Minutes

Attendance: Commissioner Schmalz, Commissioner Cohrs, Commissioner Bredeson, Commissioner Luthens, Diane Winter, Brittany Becker, Sarah Gassman, Kiza Olson

1. Meeting called to order – Commissioner Schmalz 9:06 am
2. Approval of the Agenda (Action) – Motion by Commissioner Cohrs Second by Commissioner Luthens
3. Approval of July 14, 2022 and September 8, 2022 meeting minutes\* (Action) – Motion by Commissioner Luthens Second by Commissioner Cohrs
4. Fiscal Management
  - a. Approval of Expense Report – Invoice payments\* (Action)
    - i. August – Motion by Commissioner Bredeson Second by Commissioner Schmalz
    - ii. September – Motion by Commissioner Cohrs Second by Commissioner Schmalz
    - iii. October – Motion by Commissioner Luthens Second by Commissioner Bredeson
  - b. Approval of Financial Statements – Fiscal Report\* (Action)
    - i. August – Motion by Commissioner Cohrs Second by Commissioner Schmalz
    - ii. September – Motion by Commissioner Schmalz Second by Commissioner Bredeson
    - iii. October – Motion by Commissioner Luthens Second by Commissioner Bredeson
    - iv. Discussion was had on the necessity of this report. Present to board of possible elimination of this report in 2023.
  - c. Approval of Grant Summary Report\* (Action)
    - i. August – Motion by Commissioner Schmalz Second by Commissioner Luthens
    - ii. September – Motion by Commissioner Cohrs Second by Commissioner Schmalz
    - iii. October – Motion by Commissioner Luthens Second by Commissioner Bredeson
5. Administrative Items
  - i. FFY 2021 Audit Updates
  - ii. Financial Management Update\* (Action) – Motion by Commissioner Bredeson second by Commissioner Cohrs with the addition of specified dollar amount.
    1. Final approval to be reviewed at Annual Meeting in January
  - iii. Executive Committee Meeting Update\*
  - iv. 2023 Budget Approval\*\* (Action) – Motion by Commissioner Luthens second by Commissioner Bredeson
  - v. Grant Workbook 2023\* (Action) – Motion by Commissioner Cohrs second by Commissioner Bredeson
  - vi. COLA for 2023 (Action) – Motion by Commissioner Schmalz second by Commissioner Cohrs
  - vii. Wage increase for 2023 (Action) – Motion by Commissioner Schmalz second by Commissioner Bredeson

- viii. WIC Peer Salary Scale (Action) – Motion by Commissioner Bredeson second by Commissioner Cohrs
- ix. Approval of Benefits\* (Action) – Motion by Commissioner Schmalz second by Commissioner Bredeson
- x. Dates for 2023 CHB Meetings\* (Action)
  - 1. Motion for dates of 2<sup>nd</sup> Thursday of odd months by Commissioner Cohrs second by Commissioner Bredeson
  - 2. Motion for times of meeting be 9-11 am Motion by Commissioner Schmalz second by Commissioner Bredeson
  - 3. Motion for location to continue in Hutchinson. Motion by Commissioner Schmalz second by Commissioner Bredeson
- xi. Grant Information\*
- xii. SCHSAC representatives for 2023
  - 1. Discussion was had. Final motion will be in January for representatives
- 6. Other Agenda Items
  - a. County Updates (Meeker, McLeod, Sibley)
    - i. Meeker County – COVID updates, Flu updates, staffing updates, procurement update, facility redesign update
    - ii. McLeod County – COVID updates, TB update, Nurturing Parenting curriculum update, staffing updates
    - iii. Sibley County – COVID updates, TB updates, staffing updates, procurement update, possible grant opportunities in the future for Health Equity
  - b. CHS Administrator Update\*
    - i. Discussion that Administrators Annual Review was completed

Adjourn – Motion by Commissioner Schmalz second by Commissioner Cohrs 10:57 am

---

Beth Oberg, MMS CHS Board Secretary

Date



**MEEKER-MCLEOD-SIBLEY COMMUNITY HEALTH SERVICES**  
**114 N Holcombe Ave, Suite 250, Litchfield MN 55355**  
**INVOICE PAYMENTS Acct #000991730**

	Date Uploaded to CDS:	INVOICE PAYMENTS Acct #000991730										
	Vendor Name	Vendor Address	Vendor City	Vendor State	Vendor Zip-Code	Payment Amount	Invoice #	Grant/Program Number	Account Class	Object Number	Account	Reason for Payment
1-Nov	Sarah Gassman	70681 300th st	Dassel	Mn	55325	\$ 417.65	11.1.22	100	Local Public Health Grant	6353	Meeting Expense	All Staff Meeting Expense
1-Nov	Human Inspiration Works, LLC c/o Ellie Krug	5201 Saddleback Circle	Victoria	Mn	55386	\$ 5,000.00	22-179	623	Primewest Scholarship	6265	Professional Services	Speaker for All Staff Meeting
2-Nov	Survey Systems	3650 Kent St	Shoreview	Mn	55126	\$ 10,000.00	22-13523	303	Covid-19	6350	Other Charges & Services	Health Survey
2-Nov	Survey Systems	3650 Kent St	Shoreview	Mn	55126	\$ 3,165.00	22-13523	100	Local Public Health Grant	6350	Other Charges & Services	Health Survey
2-Nov	Peopleready Inc	1002 Soluntions Center	Chicago	Il	60677	\$ 236.48	27748175	234	WIC Peer Grant	6265	Professional Services	WIC Peer Payroll
2-Nov	Peopleready Inc	1002 Soluntions Center	Chicago	Il	60677	\$ 316.31	27748176	234	WIC Peer Grant	6265	Professional Services	WIC Peer Payroll
2-Nov	Peopleready Inc	1002 Soluntions Center	Chicago	Il	60677	\$ 379.27	27748177	234	WIC Peer Grant	6265	Professional Services	WIC Peer Payroll
2-Nov	City of Hutchinson	111 Hassan St SE	Hutchinson	Mn	55350	\$ 241.00	45784	107	Workforce Development Grant	6350	Other Charges & Services	Room for All Staff Meeting
8-Nov	Teuby Continued	PO BOX 24	Glencoe	Mn	55336	\$ 400.00	1034	237	Suicide Prevention Grant	6154	Contracted Services	Training
8-Nov	Vivid Image, Inc	897 Highway 15 S	Hutchinson	Mn	55350	\$ 6,250.00	20625	212	Project Harmony Grant	6154	Contracted Services	Website
8-Nov	Teuby Continued	PO BOX 24	Hutchinson	Mn	55350	\$ 1,900.00	1032	237	Suicide Prevention Grant	6154	Contracted Services	Training
8-Nov	Peopleready Inc	1002 Soluntions Center	Chicago	Il	60677	\$ 218.89	27771492	234	WIC Peer Grant	6265	Professional Services	WIC Peer Payroll
8-Nov	Peopleready Inc	1002 Soluntions Center	Chicago	Il	60677	\$ 431.55	27771493	234	WIC Peer Grant	6265	Professional Services	WIC Peer Payroll
8-Nov	Peopleready Inc	1002 Soluntions Center	Chicago	Il	60677	\$ 230.75	27771494	234	WIC Peer Grant	6265	Professional Services	WIC Peer Payroll
15-Nov	Peopleready Inc	1002 Soluntions Center	Chicago	Il	60677	\$ 190.84	27783095	234	WIC Peer Grant	6265	Professional Services	WIC Peer Payroll
15-Nov	Peopleready Inc	1002 Soluntions Center	Chicago	Il	60677	\$ 269.20	27783096	234	WIC Peer Grant	6265	Professional Services	WIC Peer Payroll
15-Nov	Peopleready Inc	1002 Soluntions Center	Chicago	Il	60677	\$ 171.77	27783097	234	WIC Peer Grant	6265	Professional Services	WIC Peer Payroll
16-Nov	MNCCC Lockbox	PO BOX 860687	Minneapolis	Mn	55486	\$ 1,504.27	2211101	100	Local Public Health Grant	6264	PH-Doc Software	Training
16-Nov	Minnesota State Auditor	525 Park St Suite 500	St. Paul	Mn	55103	\$ 10,683.50	71823	100	Local Public Health Grant	6266	Audit Expense	Audit Services
16-Nov	Conway, Deuth & Schmiesing, PLLP	820 Sibley Ave N	Litchfield	Mn	55355	\$ 1,586.30	310719	100	Local Public Health Grant	6265	Professional Services	Professional Services
23-Nov	Any Time Catering	6709 Cty Rd 5 NW	Annandale	Mn	55302	\$ 96.00	11.2.22	238	SHIP - Well-Being	6350	Other Charges & Services	Event Items
23-Nov	Reliance Standard Life Ins Co	PO BOX 650804	Dallas	Tx	75265-0804	\$ 17.10	9-08507-0001-					Dental, Life & Disability
23-Nov	Peopleready Inc	1002 Soluntions Center	Chicago	Il	60677	\$ 162.76	27792700	234	WIC Peer Grant	6265	Professional Services	WIC Peer Payroll
23-Nov	Peopleready Inc	1002 Soluntions Center	Chicago	Il	60677	\$ 523.84	27792701	234	WIC Peer Grant	6265	Professional Services	WIC Peer Payroll
23-Nov	Peopleready Inc	1002 Soluntions Center	Chicago	Il	60677	\$ 107.37	27792702	234	WIC Peer Grant	6265	Professional Services	WIC Peer Payroll
23-Nov	Association of MN Counties	PO Box 64689	St. Paul	Mn	55164	\$ 175.00	Order# 70160	100	Local Public Health Grant	6350	Other Charges & Services	Kiza's LPHA Conference
29-Nov	Peopleready Inc	1002 Soluntions Center	Chicago	Il	60677	\$ 252.57	27808059	234	WIC Peer Grant	6265	Professional Services	WIC Peer Payroll
29-Nov	Peopleready Inc	1002 Soluntions Center	Chicago	IL	60677	\$ 242.28	27808060	234	WIC Peer Grant	6265	Professional Services	WIC Peer Payroll
29-Nov	Peopleready Inc	1002 Soluntions Center	Chicago	Il	60677	\$ 155.61	27808061	234	WIC Peer Grant	6265	Professional Services	WIC Peer Payroll

**MEEKER-MCLEOD-SIBLEY COMMUNITY HEALTH SERVICES**  
**114 N Holcombe Ave, Suite 250, Litchfield MN 55355**  
**INVOICE PAYMENTS Acct #000991730**

Date Uploaded to CDS:												
	Vendor Name	Vendor Address	Vendor City	Vendor State	Vendor Zip-Code	Payment Amount	Invoice #	Grant/Program Number	Account Class	Object Number	Account	Reason for Payment
6-Dec	Peopleready Inc	1002 Soluntions Center	Chicago	Il	60677	\$ 269.27	27823163	234	WIC Peer Grant	6265	Professional Services	WIC Peer Payroll
6-Dec	Peopleready Inc	1002 Soluntions Center	Chicago	Il	60678	\$ 295.02	27823164	234	WIC Peer Grant	6265	Professional Services	WIC Peer Payroll
6-Dec	Peopleready Inc	1002 Soluntions Center	Chicago	Il	60679	\$ 85.90	27823165	234	WIC Peer Grant	6265	Professional Services	WIC Peer Payroll
7-Dec	Teuby Continued	PO Box 24	Glencoe	Mn	55336	\$ 400.00	1037	237	Suicide Prevention Grant	6154	Contracted Services	Classes
7-Dec	4imprint	25303 Network Place	Oshkosh	WI	60673	\$ 2,981.73	24154030	206	FPSP	6403	Supplies (non office)	promotion materials
13-Dec	Michelle Rogers	2660 Ethridge Road	Connelly Springs	NC	28612	\$ 11,003.50	11.5.22	212	Project Harmony Grant	6246	Staff Development	Nurturing Parenting
13-Dec	Kiza Olson	325 S Miller ave	Litchfield	Mn	55355	\$ 258.20	12.8.22	100	Local Public Health Grant	6336	Meals/Lodging/Parking & Misc.	LPHA Conference
13-Dec	Kiza Olson	325 S Miller ave	Litchfield	Mn	55355	\$ 128.62	12.8.22	212	Project Harmony Grant	6336	Meals/Lodging/Parking & Misc.	Trainers Hotel
13-Dec	Peopleready Inc	1002 Soluntions Center	Chicago	IL	60677	\$ 246.96	27834369	234	WIC Peer Grant	6265	Professional Services	WIC Peer Payroll
13-Dec	Peopleready Inc	1002 Soluntions Center	Chicago	Il	60677	\$ 390.34	27834370	234	WIC Peer Grant	6265	Professional Services	WIC Peer Payroll
14-Dec	Peopleready Inc	1002 Soluntions Center	Chicago	Il	60677	\$ 128.84	27834371	234	WIC Peer Grant	6265	Professional Services	WIC Peer Payroll
14-Dec	City of Glencoe Attn: Jon Jerabek	1107 11th St E Suite 107	Glencoe	Mn	55336	\$ 6,379.47	10.4.22	230	SHIP-Community	6350	Other Charges & Services	Bike Safety Items
14-Dec	McLeod County Abstract & Title LLC Attn: Amy Link	235 Hassen St SE	Hutchinson	Mn	55350	\$ 16,908.41	6722	100	Local Public Health Grant	6270	IT Support	PHDoc and Network
14-Dec	Conway, Deuth & Schmiesing, PLLP	820 Sibley Ave N	Litchfield	Mn	55355	\$ 1,811.90	311412	100	Local Public Health Grant	6265	Professional Services	Professional Services
20-Dec	Peopleready Inc	1002 Soluntions Center	Chicago	Il	60677	\$ 258.19	27848425	234	WIC Peer Grant	6265	Professional Services	WIC Peer Payroll
20-Dec	Peopleready Inc	1002 Soluntions Center	Chicago	Il	60677	\$ 390.34	27848426	234	WIC Peer Grant	6265	Professional Services	WIC Peer Payroll
20-Dec	Peopleready Inc	1002 Soluntions Center	Chicago	Il	60677	\$ 207.52	27848427	234	WIC Peer Grant	6265	Professional Services	WIC Peer Payroll
28-Dec	Peopleready Inc	1002 Soluntions Center	Chicago	IL	60677	\$ 123.49	27863154	234	WIC Peer Grant	6265	Professional Services	WIC Peer Payroll
28-Dec	Peopleready Inc	1002 Soluntions Center	Chicago	Il	60677	\$ 242.28	27863155	234	WIC Peer Grant	6265	Professional Services	WIC Peer Payroll
28-Dec	Peopleready Inc	1002 Soluntions Center	Chicago	Il	60677	\$ 85.90	27863156	234	WIC Peer Grant	6265	Professional Services	WIC Peer Payroll

**MEEKER-MCLEOD-SIBLEY COMMUNITY HEALTH SERVICES**  
**114 N Holcombe Ave, Suite 250, Litchfield MN 55355**  
**INVOICE PAYMENTS Acct #000991730**

Date Uploaded to CDS:		INVOICE PAYMENTS Acct #000991730										
	Vendor Name	Vendor Address	Vendor City	Vendor State	Vendor Zip-Code	Payment Amount	Invoice #	Grant/Program Number	Account Class	Object Number	Account	Reason for Payment
3-Jan	PeopleReady	1002 Solutions Center	Chicago	Il	60677	\$ 218.88	27874967	234	WIC Peer Grant	6265	Professional Services	WIC Peer Payroll
3-Jan	PeopleReady	1002 Solutions Center	Chicago	Il	60677	\$ 275.93	27874968	234	WIC Peer Grant	6265	Professional Services	WIC Peer Payroll
3-Jan	PeopleReady	1002 Solutions Center	Chicago	Il	60677	\$ 107.36	27874969	234	WIC Peer Grant	6265	Professional Services	WIC Peer Payroll
5-Jan	Julie Kloeckl	1402 Morningside ave N	Glencoe	Mn	55336	\$ 85.00	12.29.22	100	Local Public Health Grant	6245	Dues & Registrations Fees	JK RN Licensure
5-Jan	MnCCC Lockbox	PO BOX 860687	Minneapolis	Mn	55486-2687	\$ 12,043.30	2301104	100	Local Public Health Grant	6264	PH-Doc Software	Software
5-Jan	Maryland Partnership for Prevention	10821 Red Run Blvd Unit 702	Owings Mills	MD	21117	\$ 6,300.00	1032	100	Local Public Health Grant	6265	Professional Services	PrepMod PartnerShare
5-Jan	Devin C. Hughes Enterprises LLC	7086 Crystalline Drive	Carlsbad	CA	92011	\$ 5,000.00	122622	107	Workforce Development Grant	6350	Other Charges & Services	All Staff Training
10-Jan	PeopleReady	1002 Solutions Center	Chicago	IL	60677	\$ 189.66	27884657	234	WIC Peer Grant	6265	Professional Services	WIC Peer Payroll
10-Jan	PeopleReady	1002 Solutions Center	Chicago	IL	60677	\$ 346.95	27884658	234	WIC Peer Grant	6265	Professional Services	WIC Peer Payroll
10-Jan	PeopleReady	1002 Solutions Center	Chicago	IL	60677	\$ 90.37	27884659	234	WIC Peer Grant	6265	Professional Services	WIC Peer Payroll
17-Jan	Vivid Image, Inc.	897 Hwy 15 South	Hutchinson	Mn	55350	\$ 3,243.00	20978	100	Local Public Health Grant	6265	Professional Services	Website Support
17-Jan						\$ 1,000.00	20978	230	SHIP-Community	6350	Other Charges & Services	Website Support
17-Jan						\$ 907.00	20978	306	Covid-19 3rd Grant	6350	Other Charges & Services	Website Support
17-Jan	Family Development Resources, Inc.	PO Box 982350	Park City	UT	84098	\$ 134.80	FDR37516	212	Project Harmony Grant	6246	Staff Development	Nurturing Parenting Resources
18-Jan	PeopleReady	1002 Solutions Center	Chicago	IL	60677	\$ 370.08	27895734	234	WIC Peer Grant	6265	Professional Services	WIC Peer Payroll
18-Jan	PeopleReady	1002 Solutions Center	Chicago	IL	60677	\$ 97.21	27895735	234	WIC Peer Grant	6265	Professional Services	WIC Peer Payroll
18-Jan	PeopleReady	1002 Solutions Center	Chicago	IL	60677	\$ 274.68	27902623	234	WIC Peer Grant	6265	Professional Services	WIC Peer Payroll
25-Jan	Conway, Deuth & Schmiesing, PLLP	820 Sibley Ave N	Litchfield	Mn	55355	\$ 2,606.30	311888	100	Local Public Health Grant	6265	Professional Services	Accounting Firm
25-Jan	Reliance Standard Life Insurance Company Attn: RSL Group ADMIN	PO Box 650804	Dallax	Tx	75265-0804	\$ 501.67						Dental, Life & Disability
25-Jan	Reliance Standard Life Insurance Company Attn: RSL Group ADMIN	PO Box 650804	Dallax	Tx	75265-0804	\$ 1,336.55						Dental, Life & Disability
25-Jan	PeopleReady	1002 Solutions Center	Chicago	IL	60677	\$ 292.18	27906961	234	WIC Peer Grant	6265	Professional Services	WIC Peer Payroll
25-Jan	PeopleReady	1002 Solutions Center	Chicago	IL	60677	\$ 362.37	27906962	234	WIC Peer Grant	6265	Professional Services	WIC Peer Payroll
25-Jan	PeopleReady	1002 Solutions Center	Chicago	IL	60677	\$ 97.21	27906963	234	WIC Peer Grant	6265	Professional Services	WIC Peer Payroll

**MEEKER - MCLEOD - SIBLEY COMMUNITY HEALTH SERVICES  
2022 STATEMENT OF RECEIPTS AND DISBURSEMENTS**

Grant Programs	Balance Forward as of 12/31/2021	2022 Receipts			2022 Disbursements						Balance on Hand as of 11/30/2022
		Grant Dollars	Other Dollars	Total Revenue	Vendors	Employees	Meeker County	McLeod County	Sibley County	Total Expenses	
100 Local Public Health Grant	287,992.22	524,562.00	4,883.70	529,445.70	202,953.94	85,600.54	57,845.00	57,149.24	45,596.00	449,144.72	368,293.20
103 Healthy Communities Act	11,569.67	0.00	500.00	500.00	12,069.67	0.00	0.00	0.00	0.00	12,069.67	0.00
104 CRABC	1,456.95	0.00	1,043.00	1,043.00	535.73	0.00	0.00	0.00	0.00	535.73	1,964.22
105 SAVE	50.00	0.00	0.00	0.00	0.00	0.00	0.00	0.00	0.00	0.00	50.00
106 Juniper	3,295.00	0.00	0.00	0.00	0.00	0.00	0.00	0.00	0.00	0.00	3,295.00
107 Workforce Development	0.00	74,438.34	1,250.00	75,688.34	36,989.77	21,966.60	4,057.02	5,619.50	4,733.87	73,366.76	2,321.58
203 Early Hearing Detection	0.00	2,900.00	0.00	2,900.00	0.00	0.00	1,200.00	1,475.00	225.00	2,900.00	0.00
205 Follow Along	0.00	9,242.00	0.00	9,242.00	0.00	0.00	3,579.00	2,513.00	3,150.00	9,242.00	0.00
206 FPSP	(1,127.79)	35,595.44	0.00	35,595.44	16,754.26	0.00	4,290.16	9,317.76	7,733.76	38,095.94	(3,628.29)
209 MCH	0.08	119,730.00	0.00	119,730.00	0.00	0.00	32,448.00	66,381.00	20,901.00	119,730.00	0.08
212 Project Harmony Grant	(6,965.65)	118,176.29	0.00	118,176.29	25,448.73	15,760.00	61,876.30	28,201.81	3,554.95	134,841.79	(23,631.15)
224 TANF	0.03	94,934.08	0.00	94,934.08	0.00	0.00	29,681.08	46,156.00	19,097.00	94,934.08	0.03
225 WIC-Admin	40,212.06	418,538.00	0.00	418,538.00	32,755.60	103,819.42	132,545.98	167,368.31	66,849.71	503,339.02	(44,588.96)
226 WIC-Breastfeeding Program	0.00	0.00	0.00	0.00	0.00	0.00	0.00	0.00	0.00	0.00	0.00
227 WIC Client Services	0.00	0.00	0.00	0.00	0.00	0.00	0.00	0.00	0.00	0.00	0.00
230 SHIP	(16,949.77)	274,359.17	182.54	274,541.71	75,282.23	60,934.34	80,275.33	24,740.37	24,639.20	265,871.47	(8,279.53)
234 WIC Peer Grant	(7,527.65)	33,466.00	0.00	33,466.00	33,988.54	12,962.71	83.00	0.00	0.00	47,034.25	(21,095.90)
237 Suicide Prevention Grant	(6,900.00)	23,007.45	0.00	23,007.45	12,470.00	0.00	221.91	7,615.54	0.00	20,307.45	(4,200.00)
300 Disease Prev. & Control	0.00	0.00	0.00	0.00	0.00	0.00	0.00	0.00	0.00	0.00	0.00
303 Health Disparities/Covid	37,028.22	0.00	0.00	0.00	12,517.62	176.00	0.00	0.00	3,429.26	16,122.88	20,905.34
304 Influenza Vaccine Project	(260.87)	29,162.98	0.00	29,162.98	2,487.51	34.75	0.00	0.00	26,417.06	28,939.32	(37.21)
305 COV Vacc 2 (State Funding)	(3,377.51)	0.00	0.00	0.00	0.00	0.00	0.00	0.00	0.00	0.00	(3,377.51)
306 COV Vacc 3 (Federal Funding)	(12,251.72)	455,681.44	0.00	455,681.44	4,278.99	10,694.05	160,903.28	120,721.92	132,193.00	428,791.24	14,638.48
307 ARP Incentive	11,000.00	0.00	0.00	0.00	0.00	0.00	0.00	0.00	11,000.00	11,000.00	0.00
401 Healthy Homes	(0.03)	21,120.16	0.00	21,120.16	0.00	0.00	4,478.12	10,424.30	6,214.74	21,117.16	2.97
501 MRC	267.94	0.00	0.00	0.00	0.00	0.00	0.00	0.00	0.00	0.00	267.94
502 Emergency Preparedness	5,024.96	82,494.28	0.00	82,494.28	21,966.19	47,752.11	0.00	0.00	0.00	69,718.30	17,800.94
505 EP - CRI	(35,643.37)	0.00	0.00	0.00	1,077.42	15,171.78	0.00	0.00	0.00	16,249.20	(51,892.57)
601 Child & Teen Checkups (C&TC)	(4,759.67)	232,619.71	0.00	232,619.71	0.00	0.00	88,953.45	92,388.26	51,278.00	232,619.71	(4,759.67)
622 Prinewest Health Equity Grant	25,000.00	25,000.00	0.00	25,000.00	11,000.00	0.00	0.00	0.00	0.00	11,000.00	39,000.00
623 Prinewest Health Equity Scholar	10,000.00	0.00	0.00	0.00	5,000.00	0.00	0.00	0.00	0.00	5,000.00	5,000.00
<b>Total</b>	<b>337,133.10</b>	<b>2,575,027.34</b>	<b>7,859.24</b>	<b>2,582,886.58</b>	<b>507,576.20</b>	<b>374,872.30</b>	<b>662,437.63</b>	<b>640,072.01</b>	<b>427,012.55</b>	<b>2,611,970.69</b>	<b>308,048.99</b>

WIC - Women Infants Children Grant  
FPSP - Family Planning Special Project  
SHIP - Statewide Health Improvement Program  
PHER - Public Health Emergency Response

**MEEKER - MCLEOD - SIBLEY COMMUNITY HEALTH SERVICES  
NOVEMBER STATEMENT OF RECEIPTS AND DISBURSEMENTS**

Grant Programs	Balance on Hand as of 10/31/2022	NOVEMBER 2022 Receipts			NOVEMBER 2022 Disbursements						Balance on Hand as of 11/30/2022
		Grant Dollars	Other Dollars	Total Revenue	Vendors	Employees	Meeker County	McLeod County	Sibley County	Total Expenses	
100 Local Public Health Grant	402,982.78	2,175.00	45.44	2,220.44	22,506.44	14,403.58	0.00	0.00	0.00	36,910.02	368,293.20
103 Healthy Communities Act	12,069.87	0.00	0.00	0.00	12,069.87	0.00	0.00	0.00	0.00	12,069.87	0.00
104 CRABC	1,964.22	0.00	0.00	0.00	0.00	0.00	0.00	0.00	0.00	0.00	1,964.22
105 SAVE	50.00	0.00	0.00	0.00	0.00	0.00	0.00	0.00	0.00	0.00	50.00
106 Juniper	3,295.00	0.00	0.00	0.00	0.00	0.00	0.00	0.00	0.00	0.00	3,295.00
107 Workforce Development	(11,897.40)	18,445.99	0.00	18,445.99	675.23	3,551.78	0.00	0.00	0.00	4,227.01	2,321.58
203 Early Hearing Detection	0.00	975.00	0.00	975.00	0.00	0.00	525.00	450.00	0.00	975.00	0.00
205 Follow Along	0.00	0.00	0.00	0.00	0.00	0.00	0.00	0.00	0.00	0.00	0.00
206 FPSP	2,634.53	0.00	0.00	0.00	0.00	0.00	933.29	2,666.00	2,663.53	6,262.82	(3,628.29)
209 MCH	0.08	8,612.00	0.00	8,612.00	0.00	0.00	2,381.00	0.00	6,231.00	8,612.00	0.08
212 Project Harmony Grant	(16,804.10)	32,938.91	0.00	32,938.91	10,500.43	5,236.00	15,751.14	6,290.88	1,987.51	39,765.96	(23,631.15)
224 TANF	23,676.61	0.00	0.00	0.00	0.00	0.00	7,363.36	11,538.97	4,774.25	23,676.58	0.03
225 WIC-Admin	(27,800.51)	0.00	0.00	0.00	3,479.25	13,309.20	0.00	0.00	0.00	16,788.45	(44,588.96)
226 WIC-Breastfeeding Program	0.00	0.00	0.00	0.00	0.00	0.00	0.00	0.00	0.00	0.00	0.00
227 WIC-Client Services	0.00	0.00	0.00	0.00	0.00	0.00	0.00	0.00	0.00	0.00	0.00
230 SHIP	(8,043.77)	20,802.24	0.00	20,802.24	2,817.61	7,749.61	6,560.78	1,995.40	1,914.60	21,038.00	(8,279.53)
234 WIC Peer Grant	(17,596.90)	0.00	0.00	0.00	1,956.02	1,542.98	0.00	0.00	0.00	3,499.00	(21,095.90)
237 Suicide Prevention Grant	(227.82)	0.00	0.00	0.00	2,300.00	0.00	0.00	1,672.18	0.00	3,972.18	(4,200.00)
300 Disease Prev. & Control	0.00	0.00	0.00	0.00	0.00	0.00	0.00	0.00	0.00	0.00	0.00
303 Health Disparities/Covid	34,838.94	0.00	0.00	0.00	10,504.34	0.00	0.00	0.00	3,429.26	13,933.60	20,905.34
304 Influenza Vaccine Project	(37.21)	0.00	0.00	0.00	0.00	0.00	0.00	0.00	0.00	0.00	(37.21)
305 COV Vacc 2 (State Funding)	(3,377.51)	0.00	0.00	0.00	0.00	0.00	0.00	0.00	0.00	0.00	(3,377.51)
306 COV Vacc 3 (Federal Funding)	(3,800.63)	84,289.44	0.00	84,289.44	102.34	1,394.79	29,099.28	35,253.92	0.00	65,850.33	14,638.48
307 ARP Incentive	0.00	0.00	0.00	0.00	0.00	0.00	0.00	0.00	0.00	0.00	0.00
401 Healthy Homes	6,728.56	0.00	0.00	0.00	0.00	0.00	1,369.80	3,555.88	1,799.91	6,725.59	2.97
501 MRC	267.94	0.00	0.00	0.00	0.00	0.00	0.00	0.00	0.00	0.00	267.94
502 Emergency Preparedness	25,745.34	0.00	0.00	0.00	2,235.88	5,708.52	0.00	0.00	0.00	7,944.40	17,800.94
505 EP - CRI	(50,261.06)	0.00	0.00	0.00	110.43	1,521.08	0.00	0.00	0.00	1,631.51	(51,892.57)
601 Child & Teen Checkups (C&TC)	46,451.22	0.00	0.00	0.00	0.00	0.00	16,663.83	19,855.25	14,691.81	51,210.89	(4,759.67)
622 Primewest Health Equity Grant	14,000.00	25,000.00	0.00	25,000.00	0.00	0.00	0.00	0.00	0.00	0.00	39,000.00
623 Primewest Health Equity Scholar	10,000.00	0.00	0.00	0.00	5,000.00	0.00	0.00	0.00	0.00	5,000.00	5,000.00
<b>Total</b>	<b>444,857.98</b>	<b>193,238.58</b>	<b>45.44</b>	<b>193,284.02</b>	<b>74,257.64</b>	<b>54,417.54</b>	<b>80,647.48</b>	<b>83,278.48</b>	<b>37,491.87</b>	<b>330,093.01</b>	<b>308,048.99</b>

WIC - Women Infants Children Grant  
 FPSP - Family Planning Special Project  
 SHIP - Statewide Health Improvement Program  
 PHER - Public Health Emergency Response

**MEEKER - MCLEOD - SIBLEY COMMUNITY HEALTH SERVICES  
2022 STATEMENT OF RECEIPTS AND DISBURSEMENTS**

Grant Programs	Balance Forward as of 12/31/2021	2022 Receipts			2022 Disbursements						Balance on Hand as of 12/31/2022
		Grant Dollars	Other Dollars	Total Revenue	Vendors	Employees	Meeker County	McLeod County	Sibley County	Total Expenses	
100 Local Public Health Grant	287,992.22	521,319.00	5,250.06	526,569.06	172,829.60	96,441.36	67,421.00	94,773.74	45,596.00	477,061.70	337,499.58
103 Healthy Communities Act	11,569.67	0.00	500.00	500.00	12,069.67	0.00	0.00	0.00	0.00	12,069.67	0.00
104 CRABC	1,456.95	0.00	1,043.00	1,043.00	535.73	0.00	0.00	0.00	0.00	535.73	1,964.22
105 SAVE	50.00	0.00	0.00	0.00	0.00	0.00	0.00	0.00	0.00	0.00	50.00
106 Juniper	3,295.00	0.00	0.00	0.00	0.00	0.00	0.00	0.00	0.00	0.00	3,295.00
107 Workforce Development	0.00	74,438.34	0.00	74,438.34	35,953.84	24,389.09	4,624.60	9,695.12	8,099.42	82,762.07	(8,323.73)
203 Early Hearing Detection	0.00	2,900.00	0.00	2,900.00	0.00	0.00	1,200.00	1,475.00	225.00	2,900.00	0.00
205 Follow Along	0.00	6,300.00	0.00	6,300.00	0.00	0.00	2,100.00	2,100.00	2,100.00	6,300.00	0.00
206 FPSP	(1,127.79)	35,595.44	0.00	35,595.44	19,735.99	0.00	4,290.16	9,317.76	7,733.76	41,077.67	(6,610.02)
209 MCH	0.08	82,224.00	0.00	82,224.00	0.00	0.00	23,610.00	42,087.00	16,527.00	82,224.00	0.08
212 Project Harmony Grant	(6,965.65)	118,176.29	0.00	118,176.29	37,875.05	19,456.00	61,876.30	28,201.81	3,554.95	150,964.11	(39,753.47)
224 TANF	0.03	94,934.08	0.00	94,934.08	0.00	0.00	29,681.08	46,156.00	19,097.00	94,934.08	0.03
225 WIC-Admin	40,212.06	455,612.00	0.00	455,612.00	35,353.72	112,717.02	132,545.98	167,368.31	66,849.71	514,834.74	(19,010.68)
226 WIC-Breastfeeding Program	0.00	0.00	0.00	0.00	0.00	0.00	0.00	0.00	0.00	0.00	0.00
227 WIC Client Services	0.00	0.00	0.00	0.00	0.00	0.00	0.00	0.00	0.00	0.00	0.00
230 SHIP	(16,949.77)	305,149.06	4,193.12	309,342.18	82,627.76	66,100.74	86,046.14	26,282.68	27,323.16	288,380.48	4,011.93
234 WIC Peer Grant	(7,527.65)	48,805.00	0.00	48,805.00	39,399.22	13,788.61	802.00	0.00	0.00	53,989.83	(12,712.48)
237 Suicide Prevention Grant	(6,900.00)	23,007.45	0.00	23,007.45	12,870.00	0.00	221.91	7,615.54	0.00	20,707.45	(4,600.00)
300 Disease Prev. & Control	0.00	0.00	0.00	0.00	0.00	0.00	0.00	0.00	0.00	0.00	0.00
303 Health Disparities/Covid	37,028.22	0.00	0.00	0.00	2,000.00	0.00	0.00	0.00	0.00	2,000.00	35,028.22
304 Influenza Vaccine Project	(260.87)	29,162.98	0.00	29,162.98	2.46	34.75	0.00	0.00	28,902.11	28,939.32	(37.21)
305 COV Vacc 2 (State Funding)	(3,377.51)	0.00	0.00	0.00	0.00	0.00	0.00	0.00	0.00	0.00	(3,377.51)
306 COV Vacc 3 (Federal Funding)	(12,251.72)	455,681.44	0.00	455,681.44	14,861.38	11,927.55	160,903.28	120,721.92	135,622.26	444,036.39	(606.67)
307 ARP Incentive	11,000.00	0.00	0.00	0.00	0.00	0.00	0.00	0.00	11,000.00	11,000.00	0.00
401 Healthy Homes	(0.03)	21,120.16	0.00	21,120.16	0.00	0.00	4,478.12	10,424.30	6,214.74	21,117.16	2.97
501 MRC	267.94	0.00	0.00	0.00	0.00	0.00	0.00	0.00	0.00	0.00	267.94
502 Emergency Preparedness	5,024.96	82,494.28	0.00	82,494.28	23,817.39	51,742.70	0.00	0.00	0.00	75,560.09	11,959.15
505 EP - CRI	(35,643.37)	0.00	0.00	0.00	1,148.24	16,173.90	0.00	0.00	0.00	17,322.14	(52,965.51)
601 Child & Teen Checkups (C&TC)	(4,759.67)	232,619.71	0.00	232,619.71	0.00	0.00	88,953.45	92,388.26	51,278.00	232,619.71	(4,759.67)
622 Prinewest Health Equity Grant	25,000.00	25,000.00	0.00	25,000.00	11,000.00	0.00	0.00	0.00	0.00	11,000.00	39,000.00
623 Prinewest Health Equity Scholar	10,000.00	0.00	0.00	0.00	5,000.00	0.00	0.00	0.00	0.00	5,000.00	5,000.00
<b>Total</b>	<b>337,133.10</b>	<b>2,614,539.23</b>	<b>10,986.18</b>	<b>2,625,525.41</b>	<b>507,080.05</b>	<b>412,771.72</b>	<b>668,754.02</b>	<b>658,607.44</b>	<b>430,123.11</b>	<b>2,677,336.34</b>	<b>285,322.17</b>

WIC - Women Infants Children Grant  
FPSP - Family Planning Special Project  
SHIP - Statewide Health Improvement Program  
PHER - Public Health Emergency Response

**MEEKER - MCLEOD - SIBLEY COMMUNITY HEALTH SERVICES  
DECEMBER STATEMENT OF RECEIPTS AND DISBURSEMENTS**

Grant Programs	Balance on Hand as of 11/30/2022	DECEMBER 2022 Receipts			DECEMBER 2022 Disbursements						Balance on Hand as of 12/31/2022
		Grant Dollars	Other Dollars	Total Revenue	Vendors	Employees	Meeker County	McLeod County	Sibley County	Total Expenses	
100 Local Public Health Grant	368,293.20	0.00	0.00	0.00	21,540.93	9,252.69	0.00	0.00	0.00	30,793.62	337,499.58
103 Healthy Communities Act	0.00	0.00	0.00	0.00	0.00	0.00	0.00	0.00	0.00	0.00	0.00
104 CRABC	1,964.22	0.00	0.00	0.00	0.00	0.00	0.00	0.00	0.00	0.00	1,964.22
105 SAVE	50.00	0.00	0.00	0.00	0.00	0.00	0.00	0.00	0.00	0.00	50.00
106 Juniper	3,295.00	0.00	0.00	0.00	0.00	0.00	0.00	0.00	0.00	0.00	3,295.00
107 Workforce Development	2,321.58	0.00	0.00	0.00	214.07	2,422.49	567.58	4,075.62	3,365.55	10,645.31	(8,323.73)
203 Early Hearing Detection	0.00	0.00	0.00	0.00	0.00	0.00	0.00	0.00	0.00	0.00	0.00
205 Follow Along	0.00	0.00	0.00	0.00	0.00	0.00	0.00	0.00	0.00	0.00	0.00
206 FPSP	(3,628.29)	0.00	0.00	0.00	2,981.73	0.00	0.00	0.00	0.00	2,981.73	(6,610.02)
209 MCH	0.08	0.00	0.00	0.00	0.00	0.00	0.00	0.00	0.00	0.00	0.08
212 Project Harmony Grant	(23,631.15)	0.00	0.00	0.00	12,602.32	3,520.00	0.00	0.00	0.00	16,122.32	(39,753.47)
224 TANF	0.03	0.00	0.00	0.00	0.00	0.00	0.00	0.00	0.00	0.00	0.03
225 WIC-Admin	(44,588.96)	37,074.00	0.00	37,074.00	2,598.12	8,897.60	0.00	0.00	0.00	11,495.72	(19,010.68)
226 WIC-Breastfeeding Program	0.00	0.00	0.00	0.00	0.00	0.00	0.00	0.00	0.00	0.00	0.00
227 WIC-Client Services	0.00	0.00	0.00	0.00	0.00	0.00	0.00	0.00	0.00	0.00	0.00
230 SHIP	(8,279.53)	30,789.89	4,193.12	34,983.01	7,528.07	5,166.40	5,770.81	1,542.31	2,683.96	22,691.55	4,011.93
234 WIC Peer Grant	(21,095.90)	15,339.00	0.00	15,339.00	5,951.71	1,003.87	0.00	0.00	0.00	6,955.58	(12,712.48)
237 Suicide Prevention Grant	(4,200.00)	0.00	0.00	0.00	400.00	0.00	0.00	0.00	0.00	400.00	(4,600.00)
300 Disease Prev. & Control	0.00	0.00	0.00	0.00	0.00	0.00	0.00	0.00	0.00	0.00	0.00
303 Health Disparities/Covid	20,905.34	0.00	0.00	0.00	0.00	0.00	0.00	0.00	0.00	0.00	20,905.34
304 Influenza Vaccine Project	(37.21)	0.00	0.00	0.00	0.00	0.00	0.00	0.00	0.00	0.00	(37.21)
305 COV Vacc 2 (State Funding)	(3,377.51)	0.00	0.00	0.00	0.00	0.00	0.00	0.00	0.00	0.00	(3,377.51)
306 COV Vacc 3 (Federal Funding)	14,638.48	0.00	0.00	0.00	76.27	1,046.00	0.00	0.00	0.00	1,122.27	13,516.21
307 ARP Incentive	0.00	0.00	0.00	0.00	0.00	0.00	0.00	0.00	0.00	0.00	0.00
401 Healthy Homes	2.97	0.00	0.00	0.00	0.00	0.00	0.00	0.00	0.00	0.00	2.97
501 MRC	267.94	0.00	0.00	0.00	0.00	0.00	0.00	0.00	0.00	0.00	267.94
502 Emergency Preparedness	17,800.94	0.00	0.00	0.00	1,851.20	3,990.59	0.00	0.00	0.00	5,841.79	11,959.15
505 EP - CRI	(51,892.57)	0.00	0.00	0.00	70.82	1,002.12	0.00	0.00	0.00	1,072.94	(52,965.51)
601 Child & Teen Checkups (C&TC)	(4,759.67)	0.00	0.00	0.00	0.00	0.00	0.00	0.00	0.00	0.00	(4,759.67)
622 Primewest Health Equity Grant	39,000.00	0.00	0.00	0.00	0.00	0.00	0.00	0.00	0.00	0.00	39,000.00
623 Primewest Health Equity Scholar	5,000.00	0.00	0.00	0.00	0.00	0.00	0.00	0.00	0.00	0.00	5,000.00
<b>Total</b>	<b>308,048.99</b>	<b>83,202.89</b>	<b>4,193.12</b>	<b>87,396.01</b>	<b>55,815.24</b>	<b>36,301.76</b>	<b>6,338.39</b>	<b>5,617.93</b>	<b>6,049.51</b>	<b>110,122.83</b>	<b>285,322.17</b>

WIC - Women Infants Children Grant  
FPSP - Family Planning Special Project  
SHIP - Statewide Health Improvement Program  
PHER - Public Health Emergency Response

**MEEKER - MCLEOD - SIBLEY COMMUNITY HEALTH SERVICES  
DECEMBER STATEMENT OF RECEIPTS AND DISBURSEMENTS**

Grant Programs	Balance on Hand as of 12/31/2022	JANUARY 2023 Receipts			JANUARY 2023 Disbursements						Balance on Hand as of 1/31/2023
		Grant Dollars	Other Dollars	Total Revenue	Vendors	Employees	Meeker County	McLeod County	Sibley County	Total Expenses	
100 Local Public Health Grant	337,499.58	0.00	0.00	0.00	24,715.16	12,730.62	0.00	0.00	0.00	37,445.78	300,053.80
103 Healthy Communities Act	0.00	0.00	0.00	0.00	0.00	0.00	0.00	0.00	0.00	0.00	0.00
104 CRABC	1,964.22	0.00	0.00	0.00	0.00	0.00	0.00	0.00	0.00	0.00	1,964.22
105 SAVE	50.00	0.00	0.00	0.00	0.00	0.00	0.00	0.00	0.00	0.00	50.00
106 Juniper	3,295.00	0.00	0.00	0.00	0.00	0.00	0.00	0.00	0.00	0.00	3,295.00
107 Workforce Development	(8,323.73)	0.00	0.00	0.00	5,303.46	2,665.15	0.00	0.00	0.00	7,968.61	(16,292.34)
203 Early Hearing Detection	0.00	0.00	0.00	0.00	0.00	0.00	0.00	0.00	0.00	0.00	0.00
205 Follow Along	0.00	3,980.56	0.00	3,980.56	0.00	0.00	0.00	0.00	0.00	0.00	3,980.56
206 FPSP	(6,610.02)	10,770.08	0.00	10,770.08	0.00	0.00	0.00	0.00	0.00	0.00	4,160.06
209 MCH	0.08	23,569.00	0.00	23,569.00	0.00	0.00	0.00	0.00	0.00	0.00	23,569.08
212 Project Harmony Grant	(39,753.47)	0.00	0.00	0.00	1,876.46	3,590.40	0.00	0.00	0.00	5,466.86	(45,220.33)
224 TANF	0.03	0.00	0.00	0.00	0.00	0.00	0.00	0.00	0.00	0.00	0.03
225 WIC-Admin	(19,010.68)	81,859.00	0.00	81,859.00	2,761.10	9,226.42	0.00	0.00	0.00	11,987.52	50,860.80
226 WIC-Breastfeeding Program	0.00	0.00	0.00	0.00	0.00	0.00	0.00	0.00	0.00	0.00	0.00
227 WIC-Client Services	0.00	0.00	0.00	0.00	0.00	0.00	0.00	0.00	0.00	0.00	0.00
230 SHIP	4,011.93	36,069.41	2,186.35	38,255.76	2,068.67	5,270.40	0.00	0.00	0.00	7,339.07	34,928.62
234 WIC Peer Grant	(12,712.48)	0.00	0.00	0.00	2,993.75	872.16	0.00	0.00	0.00	3,865.91	(16,578.39)
237 Suicide Prevention Grant	(4,600.00)	6,259.03	0.00	6,259.03	0.00	0.00	0.00	0.00	0.00	0.00	1,659.03
300 Disease Prev. & Control	0.00	0.00	0.00	0.00	0.00	0.00	0.00	0.00	0.00	0.00	0.00
303 Health Disparities/Covid	20,905.34	0.00	0.00	0.00	0.00	0.00	0.00	0.00	0.00	0.00	20,905.34
304 Influenza Vaccine Project	(37.21)	0.00	0.00	0.00	0.00	0.00	0.00	0.00	0.00	0.00	(37.21)
305 COV Vacc 2 (State Funding)	(3,377.51)	0.00	0.00	0.00	0.00	0.00	0.00	0.00	0.00	0.00	(3,377.51)
306 COV Vacc 3 (Federal Funding)	13,516.21	62,021.09	0.00	62,021.09	993.78	1,170.62	0.00	0.00	0.00	2,164.40	73,372.90
307 ARP Incentive	0.00	0.00	0.00	0.00	0.00	0.00	0.00	0.00	0.00	0.00	0.00
401 Healthy Homes	2.97	0.00	0.00	0.00	0.00	0.00	0.00	0.00	0.00	0.00	2.97
501 MRC	267.94	0.00	0.00	0.00	0.00	0.00	0.00	0.00	0.00	0.00	267.94
502 Emergency Preparedness	11,959.15	0.00	0.00	0.00	1,940.72	4,289.95	0.00	0.00	0.00	6,230.67	5,728.48
505 EP - CRI	(52,965.51)	0.00	0.00	0.00	68.24	949.26	0.00	0.00	0.00	1,017.50	(53,983.01)
601 Child & Teen Checkups (C&TC)	(4,759.67)	76,050.96	0.00	76,050.96	0.00	0.00	0.00	0.00	0.00	0.00	71,291.29
622 Primewest Health Equity Grant	39,000.00	0.00	0.00	0.00	0.00	0.00	0.00	0.00	0.00	0.00	39,000.00
623 Primewest Health Equity Scholar	5,000.00	0.00	0.00	0.00	0.00	0.00	0.00	0.00	0.00	0.00	5,000.00
<b>Total</b>	<b>285,322.17</b>	<b>300,579.13</b>	<b>2,186.35</b>	<b>302,765.48</b>	<b>42,721.34</b>	<b>40,764.98</b>	<b>-</b>	<b>-</b>	<b>-</b>	<b>83,486.32</b>	<b>504,601.33</b>

WIC - Women Infants Children Grant  
FPSP - Family Planning Special Project  
SHIP - Statewide Health Improvement Program  
PHER - Public Health Emergency Response



**MEEKER - MCLEOD - SIBLEY COMMUNITY HEALTH SERVICES  
2023 STATEMENT OF RECEIPTS AND DISBURSEMENTS**

Grant Programs	Balance Forward as of 12/31/2022	2023 Receipts			2023 Disbursements						Balance on Hand as of 1/31/2023
		Grant Dollars	Other Dollars	Total Revenue	Vendors	Employees	Meeker County	McLeod County	Sibley County	Total Expenses	
100 Local Public Health Grant	337,499.58	0.00	0.00	0.00	24,715.16	12,730.62	0.00	0.00	0.00	37,445.78	300,053.80
103 Healthy Communities Act	0.00	0.00	0.00	0.00	0.00	0.00	0.00	0.00	0.00	0.00	0.00
104 CRABC	1,964.22	0.00	0.00	0.00	0.00	0.00	0.00	0.00	0.00	0.00	1,964.22
105 SAVE	50.00	0.00	0.00	0.00	0.00	0.00	0.00	0.00	0.00	0.00	50.00
106 Juniper	3,295.00	0.00	0.00	0.00	0.00	0.00	0.00	0.00	0.00	0.00	3,295.00
107 Workforce Development	(8,323.73)	0.00	0.00	0.00	5,303.46	2,665.15	0.00	0.00	0.00	7,968.61	(16,292.34)
203 Early Hearing Detection	0.00	0.00	0.00	0.00	0.00	0.00	0.00	0.00	0.00	0.00	0.00
205 Follow Along	0.00	3,980.56	0.00	3,980.56	0.00	0.00	0.00	0.00	0.00	0.00	3,980.56
206 FPSP	(6,610.02)	10,770.08	0.00	10,770.08	0.00	0.00	0.00	0.00	0.00	0.00	4,160.06
209 MCH	0.08	23,569.00	0.00	23,569.00	0.00	0.00	0.00	0.00	0.00	0.00	23,569.08
212 Project Harmony Grant	(39,753.47)	0.00	0.00	0.00	1,876.46	3,590.40	0.00	0.00	0.00	5,466.86	(45,220.33)
224 TANF	0.03	0.00	0.00	0.00	0.00	0.00	0.00	0.00	0.00	0.00	0.03
225 WIC-Admin	(19,010.68)	81,859.00	0.00	81,859.00	2,761.10	9,226.42	0.00	0.00	0.00	11,987.52	50,860.80
226 WIC-Breastfeeding Program	0.00	0.00	0.00	0.00	0.00	0.00	0.00	0.00	0.00	0.00	0.00
227 WIC Client Services	0.00	0.00	0.00	0.00	0.00	0.00	0.00	0.00	0.00	0.00	0.00
230 SHIP	4,011.93	36,069.41	2,186.35	38,255.76	2,068.67	5,270.40	0.00	0.00	0.00	7,339.07	34,928.62
234 WIC Peer Grant	(12,712.48)	0.00	0.00	0.00	2,993.75	872.16	0.00	0.00	0.00	3,865.91	(16,578.39)
237 Suicide Prevention Grant	(4,600.00)	6,259.03	0.00	6,259.03	0.00	0.00	0.00	0.00	0.00	0.00	1,659.03
300 Disease Prev. & Control	0.00	0.00	0.00	0.00	0.00	0.00	0.00	0.00	0.00	0.00	0.00
303 Health Disparities/Covid	35,028.22	0.00	0.00	0.00	0.00	0.00	0.00	0.00	0.00	0.00	35,028.22
304 Influenza Vaccine Project	(37.21)	0.00	0.00	0.00	0.00	0.00	0.00	0.00	0.00	0.00	(37.21)
305 COV Vacc 2 (State Funding)	(3,377.51)	0.00	0.00	0.00	0.00	0.00	0.00	0.00	0.00	0.00	(3,377.51)
306 COV Vacc 3 (Federal Funding)	(606.67)	62,021.09	0.00	62,021.09	993.78	1,170.62	0.00	0.00	0.00	2,164.40	59,250.02
307 ARP Incentive	0.00	0.00	0.00	0.00	0.00	0.00	0.00	0.00	0.00	0.00	0.00
401 Healthy Homes	2.97	0.00	0.00	0.00	0.00	0.00	0.00	0.00	0.00	0.00	2.97
501 MRC	267.94	0.00	0.00	0.00	0.00	0.00	0.00	0.00	0.00	0.00	267.94
502 Emergency Preparedness	11,959.15	0.00	0.00	0.00	1,940.72	4,289.95	0.00	0.00	0.00	6,230.67	5,728.48
505 EP - CRI	(52,965.51)	0.00	0.00	0.00	68.24	949.26	0.00	0.00	0.00	1,017.50	(53,983.01)
601 Child & Teen Checkups (C&TC)	(4,759.67)	76,050.96	0.00	76,050.96	0.00	0.00	0.00	0.00	0.00	0.00	71,291.29
622 Prinewest Health Equity Grant	39,000.00	0.00	0.00	0.00	0.00	0.00	0.00	0.00	0.00	0.00	39,000.00
623 Primewest Health Equity Scholar	5,000.00	0.00	0.00	0.00	0.00	0.00	0.00	0.00	0.00	0.00	5,000.00
<b>Total</b>	<b>285,322.17</b>	<b>300,579.13</b>	<b>2,186.35</b>	<b>302,765.48</b>	<b>42,721.34</b>	<b>40,764.98</b>	<b>-</b>	<b>-</b>	<b>-</b>	<b>83,486.32</b>	<b>504,601.33</b>

WIC - Women Infants Children Grant  
FPSP - Family Planning Special Project  
SHIP - Statewide Health Improvement Program  
PHER - Public Health Emergency Response

12:31 PM

12/05/22

Accrual Basis

# Meeker-McLeod-Sibley Community Health Services

## Grant Summary Report

November 2022

	100 - Local Public Health Grant	103 - Healthy Communities Act.	107 - Workforce Development
Ordinary Income/Expense			
Income			
5300 · State Grant	0.00	0.00	0.00
5301 · Project Harmony Grant	0.00	0.00	0.00
5400 · Federal Grant	0.00	0.00	18,445.99
5404 · Early Hearing Detect/Intervent	0.00	0.00	0.00
5414 · MCH Grant	0.00	0.00	0.00
5860 · Miscellaneous	2,220.44	0.00	0.00
<b>Total Income</b>	<b>2,220.44</b>	<b>0.00</b>	<b>18,445.99</b>
Expense			
6105 · Salaries & Wages-FT	3,507.44	0.00	3,150.00
6110 · Salaries & Wages	10,896.14	0.00	401.78
6152 · HSA Insurance-County Share	100.00	0.00	0.00
6153 · Health & Life Ins-County Share	105.02	0.00	0.00
6154 · Contracted Services	0.00	0.00	0.00
6163 · PERA-County Share	1,345.98	0.00	0.00
6175 · FICA-County Share	1,101.02	0.00	271.73
6203 · Communications	51.27	0.00	0.00
6246 · Staff Development	0.00	0.00	0.00
6264 · PH.DOC Software	1,504.27	0.00	0.00
6265 · Professional Services	3,307.30	0.00	0.00
6266 · Audit Expense	10,683.50	0.00	0.00
6268 · Bank Service Fees & Charges	6.94	0.00	0.00
6269 · Payroll Services	36.75	0.00	0.00
6335 · Mileage	558.75	0.00	162.50
6336 · Meals/Lodging/Parking & Misc.	0.00	0.00	0.00
6350 · Other Charges & Services	3,165.00	12,069.67	241.00
6353 · Meeting Expense	417.65	0.00	0.00
6402 · Office Supplies	122.99	0.00	0.00
6858 · FPSP County Payment	0.00	0.00	0.00
6859 · MCH County Payment	0.00	0.00	0.00
6862 · Project Harmony CP	0.00	0.00	0.00
6863 · Healthy Homes CP	0.00	0.00	0.00
6864 · Early Hearing & Dect. CP	0.00	0.00	0.00
6865 · SHIP - County Payment	0.00	0.00	0.00
6867 · C & TC County Payment	0.00	0.00	0.00
6871 · TANF	0.00	0.00	0.00
6872 · Covid-19	0.00	0.00	0.00
6875 · Covid Vacc 3	0.00	0.00	0.00
<b>Total Expense</b>	<b>36,910.02</b>	<b>12,069.67</b>	<b>4,227.01</b>
<b>Net Ordinary Income</b>	<b>-34,689.58</b>	<b>-12,069.67</b>	<b>14,218.98</b>
<b>Net Income</b>	<b>-34,689.58</b>	<b>-12,069.67</b>	<b>14,218.98</b>

**Meeker-McLeod-Sibley Community Health Services**  
**Grant Summary Report**  
**November 2022**

	203 - Early Hearing Detection	206 - FPSP	209 - MCH
<b>Ordinary Income/Expense</b>			
Income			
5300 · State Grant	0.00	0.00	0.00
5301 · Project Harmony Grant	0.00	0.00	0.00
5400 · Federal Grant	0.00	0.00	0.00
5404 · Early Hearing Detect/Intervent	975.00	0.00	0.00
5414 · MCH Grant	0.00	0.00	8,612.00
5860 · Miscellaneous	0.00	0.00	0.00
<b>Total Income</b>	<b>975.00</b>	<b>0.00</b>	<b>8,612.00</b>
Expense			
6105 · Salaries & Wages-FT	0.00	0.00	0.00
6110 · Salaries & Wages	0.00	0.00	0.00
6152 · HSA Insurance-County Share	0.00	0.00	0.00
6153 · Health & Life Ins-County Share	0.00	0.00	0.00
6154 · Contracted Services	0.00	0.00	0.00
6163 · PERA-County Share	0.00	0.00	0.00
6175 · FICA-County Share	0.00	0.00	0.00
6203 · Communications	0.00	0.00	0.00
6246 · Staff Development	0.00	0.00	0.00
6264 · PH.DOC Software	0.00	0.00	0.00
6265 · Professional Services	0.00	0.00	0.00
6266 · Audit Expense	0.00	0.00	0.00
6268 · Bank Service Fees & Charges	0.00	0.00	0.00
6269 · Payroll Services	0.00	0.00	0.00
6335 · Mileage	0.00	0.00	0.00
6336 · Meals/Lodging/Parking & Misc.	0.00	0.00	0.00
6350 · Other Charges & Services	0.00	0.00	0.00
6353 · Meeting Expense	0.00	0.00	0.00
6402 · Office Supplies	0.00	0.00	0.00
6858 · FPSP County Payment	0.00	6,262.82	0.00
6859 · MCH County Payment	0.00	0.00	8,612.00
6862 · Project Harmony CP	0.00	0.00	0.00
6863 · Healthy Homes CP	0.00	0.00	0.00
6864 · Early Hearing & Dect. CP	975.00	0.00	0.00
6865 · SHIP - County Payment	0.00	0.00	0.00
6867 · C & TC County Payment	0.00	0.00	0.00
6871 · TANF	0.00	0.00	0.00
6872 · Covid-19	0.00	0.00	0.00
6875 · Covid Vacc 3	0.00	0.00	0.00
<b>Total Expense</b>	<b>975.00</b>	<b>6,262.82</b>	<b>8,612.00</b>
<b>Net Ordinary Income</b>	<b>0.00</b>	<b>-6,262.82</b>	<b>0.00</b>
<b>Net Income</b>	<b>0.00</b>	<b>-6,262.82</b>	<b>0.00</b>

12:31 PM

12/05/22

Accrual Basis

**Meeker-McLeod-Sibley Community Health Services**  
**Grant Summary Report**  
November 2022

	212 - Project Harmony Grant	224 - TANF	225 - WIC-Admin
Ordinary Income/Expense			
Income			
5300 · State Grant	32,938.91	0.00	0.00
5301 · Project Harmony Grant	0.00	0.00	0.00
5400 · Federal Grant	0.00	0.00	0.00
5404 · Early Hearing Detect/Intervent	0.00	0.00	0.00
5414 · MCH Grant	0.00	0.00	0.00
5860 · Miscellaneous	0.00	0.00	0.00
<b>Total Income</b>	<b>32,938.91</b>	<b>0.00</b>	<b>0.00</b>
Expense			
6105 · Salaries & Wages-FT	5,236.00	0.00	13,309.20
6110 · Salaries & Wages	0.00	0.00	0.00
6152 · HSA Insurance-County Share	100.00	0.00	100.00
6153 · Health & Life Ins-County Share	663.70	0.00	1,001.64
6154 · Contracted Services	6,250.00	0.00	0.00
6163 · PERA-County Share	396.00	0.00	1,113.90
6175 · FICA-County Share	396.86	0.00	962.67
6203 · Communications	51.27	0.00	129.80
6246 · Staff Development	1,473.35	0.00	0.00
6264 · PH.DOC Software	0.00	0.00	0.00
6265 · Professional Services	0.00	0.00	0.00
6266 · Audit Expense	0.00	0.00	0.00
6268 · Bank Service Fees & Charges	0.00	0.00	0.00
6269 · Payroll Services	0.00	0.00	0.00
6335 · Mileage	488.13	0.00	131.25
6336 · Meals/Lodging/Parking & Misc.	491.84	0.00	0.00
6350 · Other Charges & Services	0.00	0.00	0.00
6353 · Meeting Expense	0.00	0.00	0.00
6402 · Office Supplies	0.00	0.00	39.99
6858 · FPSP County Payment	0.00	0.00	0.00
6859 · MCH County Payment	0.00	0.00	0.00
6862 · Project Harmony CP	24,029.53	0.00	0.00
6863 · Healthy Homes CP	0.00	0.00	0.00
6864 · Early Hearing & Dect. CP	0.00	0.00	0.00
6865 · SHIP - County Payment	0.00	0.00	0.00
6867 · C & TC County Payment	0.00	0.00	0.00
6871 · TANF	0.00	23,676.58	0.00
6872 · Covid-19	0.00	0.00	0.00
6875 · Covid Vacc 3	0.00	0.00	0.00
<b>Total Expense</b>	<b>39,576.68</b>	<b>23,676.58</b>	<b>16,788.45</b>
<b>Net Ordinary Income</b>	<b>-6,637.77</b>	<b>-23,676.58</b>	<b>-16,788.45</b>
<b>Net Income</b>	<b>-6,637.77</b>	<b>-23,676.58</b>	<b>-16,788.45</b>

12:31 PM

12/05/22

Accrual Basis

**Meeker-McLeod-Sibley Community Health Services**  
**Grant Summary Report**  
**November 2022**

	230 - SHIP	234 - WIC Peer Grant	237 - Suicide Prevention Grant
Ordinary Income/Expense			
Income			
5300 · State Grant	20,802.24	0.00	0.00
5301 · Project Harmony Grant	0.00	0.00	0.00
5400 · Federal Grant	0.00	0.00	0.00
5404 · Early Hearing Detect/Intervent	0.00	0.00	0.00
5414 · MCH Grant	0.00	0.00	0.00
5860 · Miscellaneous	0.00	0.00	0.00
<b>Total Income</b>	<b>20,802.24</b>	<b>0.00</b>	<b>0.00</b>
Expense			
6105 · Salaries & Wages-FT	7,749.61	1,542.98	0.00
6110 · Salaries & Wages	0.00	0.00	0.00
6152 · HSA Insurance-County Share	0.00	0.00	0.00
6153 · Health & Life Ins-County Share	310.37	0.00	0.00
6154 · Contracted Services	0.00	0.00	2,300.00
6163 · PERA-County Share	581.22	0.00	0.00
6175 · FICA-County Share	591.01	106.90	0.00
6203 · Communications	121.27	304.24	0.00
6246 · Staff Development	0.00	0.00	0.00
6264 · PH.DOC Software	0.00	0.00	0.00
6265 · Professional Services	0.00	1,498.91	0.00
6266 · Audit Expense	0.00	0.00	0.00
6268 · Bank Service Fees & Charges	0.00	0.00	0.00
6269 · Payroll Services	0.00	0.00	0.00
6335 · Mileage	496.89	0.00	0.00
6336 · Meals/Lodging/Parking & Misc.	491.84	0.00	0.00
6350 · Other Charges & Services	225.01	0.00	0.00
6353 · Meeting Expense	0.00	0.00	0.00
6402 · Office Supplies	0.00	45.97	0.00
6858 · FPSP County Payment	0.00	0.00	0.00
6859 · MCH County Payment	0.00	0.00	0.00
6862 · Project Harmony CP	0.00	0.00	0.00
6863 · Healthy Homes CP	0.00	0.00	0.00
6864 · Early Hearing & Dect. CP	0.00	0.00	0.00
6865 · SHIP - County Payment	10,470.78	0.00	0.00
6867 · C & TC County Payment	0.00	0.00	0.00
6871 · TANF	0.00	0.00	1,672.18
6872 · Covid-19	0.00	0.00	0.00
6875 · Covid Vacc 3	0.00	0.00	0.00
<b>Total Expense</b>	<b>21,038.00</b>	<b>3,499.00</b>	<b>3,972.18</b>
<b>Net Ordinary Income</b>	<b>-235.76</b>	<b>-3,499.00</b>	<b>-3,972.18</b>
<b>Net Income</b>	<b>-235.76</b>	<b>-3,499.00</b>	<b>-3,972.18</b>

**Meeker-McLeod-Sibley Community Health Services**  
**Grant Summary Report**  
**November 2022**

	303 - Health Disparities/ Covid	306 - COV Vacc 3 (Fed Funding)	401 - Healthy Homes
Ordinary Income/Expense			
Income			
5300 · State Grant	0.00	0.00	0.00
5301 · Project Harmony Grant	0.00	0.00	0.00
5400 · Federal Grant	0.00	84,289.44	0.00
5404 · Early Hearing Detect/Intervent	0.00	0.00	0.00
5414 · MCH Grant	0.00	0.00	0.00
5860 · Miscellaneous	0.00	0.00	0.00
<b>Total Income</b>	<b>0.00</b>	<b>84,289.44</b>	<b>0.00</b>
Expense			
6105 · Salaries & Wages-FT	0.00	1,260.86	0.00
6110 · Salaries & Wages	0.00	133.93	0.00
6152 · HSA Insurance-County Share	0.00	0.00	0.00
6153 · Health & Life Ins-County Share	0.00	0.00	0.00
6154 · Contracted Services	0.00	0.00	0.00
6163 · PERA-County Share	0.00	0.00	0.00
6175 · FICA-County Share	0.00	102.34	0.00
6203 · Communications	0.00	0.00	0.00
6246 · Staff Development	0.00	0.00	0.00
6264 · PH.DOC Software	0.00	0.00	0.00
6265 · Professional Services	0.00	0.00	0.00
6266 · Audit Expense	0.00	0.00	0.00
6268 · Bank Service Fees & Charges	0.00	0.00	0.00
6269 · Payroll Services	0.00	0.00	0.00
6335 · Mileage	0.00	0.00	0.00
6336 · Meals/Lodging/Parking & Misc.	0.00	0.00	0.00
6350 · Other Charges & Services	10,693.62	0.00	0.00
6353 · Meeting Expense	0.00	0.00	0.00
6402 · Office Supplies	0.00	0.00	0.00
6858 · FPSP County Payment	0.00	0.00	0.00
6859 · MCH County Payment	0.00	0.00	0.00
6862 · Project Harmony CP	0.00	0.00	0.00
6863 · Healthy Homes CP	0.00	0.00	6,725.59
6864 · Early Hearing & Dect. CP	0.00	0.00	0.00
6865 · SHIP - County Payment	0.00	0.00	0.00
6867 · C & TC County Payment	0.00	0.00	0.00
6871 · TANF	0.00	0.00	0.00
6872 · Covid-19	3,429.26	0.00	0.00
6875 · Covid Vacc 3	0.00	64,353.20	0.00
<b>Total Expense</b>	<b>14,122.88</b>	<b>65,850.33</b>	<b>6,725.59</b>
<b>Net Ordinary Income</b>	<b>-14,122.88</b>	<b>18,439.11</b>	<b>-6,725.59</b>
<b>Net Income</b>	<b>-14,122.88</b>	<b>18,439.11</b>	<b>-6,725.59</b>

# Meeker-McLeod-Sibley Community Health Services

## Grant Summary Report

November 2022

	502 - Emergency Preparedness	505 - EP - CRI	601 - Child & Teen Checkups
Ordinary Income/Expense			
Income			
5300 · State Grant	0.00	0.00	0.00
5301 · Project Harmony Grant	0.00	0.00	0.00
5400 · Federal Grant	0.00	0.00	0.00
5404 · Early Hearing Detect/Intervent	0.00	0.00	0.00
5414 · MCH Grant	0.00	0.00	0.00
5860 · Miscellaneous	0.00	0.00	0.00
Total Income	0.00	0.00	0.00
Expense			
6105 · Salaries & Wages-FT	5,708.52	1,521.08	0.00
6110 · Salaries & Wages	0.00	0.00	0.00
6152 · HSA Insurance-County Share	100.00	0.00	0.00
6153 · Health & Life Ins-County Share	948.38	0.00	0.00
6154 · Contracted Services	0.00	0.00	0.00
6163 · PERA-County Share	644.22	0.00	0.00
6175 · FICA-County Share	414.50	110.43	0.00
6203 · Communications	91.28	0.00	0.00
6246 · Staff Development	0.00	0.00	0.00
6264 · PH.DOC Software	0.00	0.00	0.00
6265 · Professional Services	0.00	0.00	0.00
6266 · Audit Expense	0.00	0.00	0.00
6268 · Bank Service Fees & Charges	0.00	0.00	0.00
6269 · Payroll Services	0.00	0.00	0.00
6335 · Mileage	37.50	0.00	0.00
6336 · Meals/Lodging/Parking & Misc.	0.00	0.00	0.00
6350 · Other Charges & Services	0.00	0.00	0.00
6353 · Meeting Expense	0.00	0.00	0.00
6402 · Office Supplies	0.00	0.00	0.00
6858 · FPSP County Payment	0.00	0.00	19,855.25
6859 · MCH County Payment	0.00	0.00	0.00
6862 · Project Harmony CP	0.00	0.00	0.00
6863 · Healthy Homes CP	0.00	0.00	0.00
6864 · Early Hearing & Dect. CP	0.00	0.00	0.00
6865 · SHIP - County Payment	0.00	0.00	0.00
6867 · C & TC County Payment	0.00	0.00	31,355.64
6871 · TANF	0.00	0.00	0.00
6872 · Covid-19	0.00	0.00	0.00
6875 · Covid Vacc 3	0.00	0.00	0.00
Total Expense	7,944.40	1,631.51	51,210.89
Net Ordinary Income	-7,944.40	-1,631.51	-51,210.89
Net Income	-7,944.40	-1,631.51	-51,210.89

12:31 PM

12/05/22

Accrual Basis

# Meeker-McLeod-Sibley Community Health Services

## Grant Summary Report

November 2022

	622- Prime West Equity Grant	623-PrimeWestEquity Scholarship	Unclassified
Ordinary Income/Expense			
Income			
5300 · State Grant	0.00	0.00	0.00
5301 · Project Harmony Grant	25,000.00	0.00	0.00
5400 · Federal Grant	0.00	0.00	0.00
5404 · Early Hearing Detect/Intervent	0.00	0.00	0.00
5414 · MCH Grant	0.00	0.00	0.00
5860 · Miscellaneous	0.00	0.00	0.00
Total Income	25,000.00	0.00	0.00
Expense			
6105 · Salaries & Wages-FT	0.00	0.00	0.00
6110 · Salaries & Wages	0.00	0.00	0.00
6152 · HSA Insurance-County Share	0.00	0.00	0.00
6153 · Health & Life Ins-County Share	0.00	0.00	0.00
6154 · Contracted Services	0.00	0.00	0.00
6163 · PERA-County Share	0.00	0.00	0.00
6175 · FICA-County Share	0.00	0.00	0.00
6203 · Communications	0.00	0.00	0.00
6246 · Staff Developement	0.00	0.00	0.00
6264 · PH.DOC Software	0.00	0.00	0.00
6265 · Professional Services	0.00	5,000.00	0.00
6266 · Audit Expense	0.00	0.00	0.00
6268 · Bank Service Fees & Charges	0.00	0.00	0.00
6269 · Payroll Services	0.00	0.00	0.00
6335 · Mileage	0.00	0.00	0.00
6336 · Meals/Lodging/Parking & Misc.	0.00	0.00	0.00
6350 · Other Charges & Services	0.00	0.00	0.00
6353 · Meeting Expense	0.00	0.00	0.00
6402 · Office Supplies	0.00	0.00	0.00
6858 · FPSP County Payment	0.00	0.00	0.00
6859 · MCH County Payment	0.00	0.00	0.00
6862 · Project Harmony CP	0.00	0.00	0.00
6863 · Healthy Homes CP	0.00	0.00	0.00
6864 · Early Hearing & Dect. CP	0.00	0.00	0.00
6865 · SHIP - County Payment	0.00	0.00	0.00
6867 · C & TC County Payment	0.00	0.00	0.00
6871 · TANF	0.00	0.00	0.00
6872 · Covid-19	0.00	0.00	0.00
6875 · Covid Vacc 3	0.00	0.00	0.00
Total Expense	0.00	5,000.00	0.00
Net Ordinary Income	25,000.00	-5,000.00	0.00
Net Income	25,000.00	-5,000.00	0.00



12:31 PM

12/05/22

Accrual Basis

**Meeker-McLeod-Sibley Community Health Services**  
**Grant Summary Report**  
**November 2022**

	TOTAL
Ordinary Income/Expense	
Income	
5300 · State Grant	53,741.15
5301 · Project Harmony Grant	25,000.00
5400 · Federal Grant	102,735.43
5404 · Early Hearing Detect/Intervent	975.00
5414 · MCH Grant	8,612.00
5860 · Miscellaneous	2,220.44
Total Income	193,284.02
Expense	
6105 · Salaries & Wages-FT	42,985.69
6110 · Salaries & Wages	11,431.85
6152 · HSA Insurance-County Share	400.00
6153 · Health & Life Ins-County Share	3,029.11
6154 · Contracted Services	8,550.00
6163 · PERA-County Share	4,081.32
6175 · FICA-County Share	4,057.46
6203 · Communications	749.13
6246 · Staff Development	1,473.35
6264 · PH.DOC Software	1,504.27
6265 · Professional Services	9,806.21
6266 · Audit Expense	10,683.50
6268 · Bank Service Fees & Charges	6.94
6269 · Payroll Services	36.75
6335 · Mileage	1,875.02
6336 · Meals/Lodging/Parking & Misc.	983.68
6350 · Other Charges & Services	26,394.30
6353 · Meeting Expense	417.65
6402 · Office Supplies	208.95
6858 · FPSP County Payment	26,118.07
6859 · MCH County Payment	8,612.00
6862 · Project Harmony CP	24,029.53
6863 · Healthy Homes CP	6,725.59
6864 · Early Hearing & Dect. CP	975.00
6865 · SHIP - County Payment	10,470.78
6867 · C & TC County Payment	31,355.64
6871 · TANF	25,348.76
6872 · Covid-19	3,429.26
6875 · Covid Vacc 3	64,353.20
Total Expense	330,093.01
Net Ordinary Income	-136,808.99
Net Income	-136,808.99

# Meeker-McLeod-Sibley Community Health Services

## Grant Summary Report

### December 2022

	100 - Local Public Health Grant	107 - Workforce Development	206 - FPSP
<b>Ordinary Income/Expense</b>			
<b>Income</b>			
5300 · State Grant	0.00	0.00	0.00
5413 · WIC Grant	0.00	0.00	0.00
5459 · WIC Peer Counseling - I	0.00	0.00	0.00
5990 · Refunds & Reimbursements	0.00	0.00	0.00
<b>Total Income</b>	<b>0.00</b>	<b>0.00</b>	<b>0.00</b>
<b>Expense</b>			
6105 · Salaries & Wages-FT	3,132.31	2,047.50	0.00
6110 · Salaries & Wages	6,120.38	374.99	0.00
6152 · HSA Insurance-County Share	100.00	0.00	0.00
6153 · Health & Life Ins-County Share	105.02	0.00	0.00
6154 · Contracted Services	0.00	0.00	0.00
6163 · PERA-County Share	899.09	0.00	0.00
6175 · FICA-County Share	707.31	185.32	0.00
6203 · Communications	51.27	0.00	0.00
6246 · Staff Development	0.00	0.00	0.00
6265 · Professional Services	1,811.90	0.00	0.00
6268 · Bank Service Fees & Charges	18.95	0.00	0.00
6269 · Payroll Services	24.50	0.00	0.00
6270 · IT Support	16,908.41	0.00	0.00
6335 · Mileage	325.00	28.75	0.00
6336 · Meals/Lodging/Parking & Misc.	258.20	0.00	0.00
6350 · Other Charges & Services	175.00	0.00	0.00
6360 · Training	60.00	0.00	0.00
6402 · Office Supplies	96.28	0.00	0.00
6403 · Supplies (non office)	0.00	0.00	2,981.73
6861 · WIC Peer Counseling CP	0.00	0.00	0.00
6865 · SHIP - County Payment	0.00	0.00	0.00
6877 · Workforce Development	0.00	8,008.75	0.00
<b>Total Expense</b>	<b>30,793.62</b>	<b>10,645.31</b>	<b>2,981.73</b>
<b>Net Ordinary Income</b>	<b>-30,793.62</b>	<b>-10,645.31</b>	<b>-2,981.73</b>
<b>Net Income</b>	<b>-30,793.62</b>	<b>-10,645.31</b>	<b>-2,981.73</b>

4:58 PM

01/10/23

Accrual Basis

**Meeker-McLeod-Sibley Community Health Services**  
**Grant Summary Report**  
**December 2022**

	212 - Project Harmony Grant	225 - WIC-Admin	230 - SHIP
<b>Ordinary Income/Expense</b>			
<b>Income</b>			
5300 · State Grant	0.00	0.00	30,789.89
5413 · WIC Grant	0.00	37,074.00	0.00
5459 · WIC Peer Counseling - I	0.00	0.00	0.00
5990 · Refunds & Reimbursements	0.00	0.00	4,193.12
<b>Total Income</b>	<b>0.00</b>	<b>37,074.00</b>	<b>34,983.01</b>
<b>Expense</b>			
6105 · Salaries & Wages-FT	3,520.00	8,897.60	5,166.40
6110 · Salaries & Wages	0.00	0.00	0.00
6152 · HSA Insurance-County Share	100.00	100.00	0.00
6153 · Health & Life Ins-County Share	663.70	1,001.64	102.26
6154 · Contracted Services	0.00	0.00	0.00
6163 · PERA-County Share	264.00	742.60	387.48
6175 · FICA-County Share	265.60	624.08	395.22
6203 · Communications	51.27	129.80	128.26
6246 · Staff Development	11,023.50	0.00	0.00
6265 · Professional Services	0.00	0.00	0.00
6268 · Bank Service Fees & Charges	0.00	0.00	0.00
6269 · Payroll Services	0.00	0.00	0.00
6270 · IT Support	0.00	0.00	0.00
6335 · Mileage	105.63	0.00	39.38
6336 · Meals/Lodging/Parking & Misc.	128.62	0.00	0.00
6350 · Other Charges & Services	0.00	0.00	6,475.47
6360 · Training	0.00	0.00	0.00
6402 · Office Supplies	0.00	0.00	0.00
6403 · Supplies (non office)	0.00	0.00	0.00
6861 · WIC Peer Counseling CP	0.00	0.00	0.00
6865 · SHIP - County Payment	0.00	0.00	9,997.08
6877 · Workforce Development	0.00	0.00	0.00
<b>Total Expense</b>	<b>16,122.32</b>	<b>11,495.72</b>	<b>22,691.55</b>
<b>Net Ordinary Income</b>	<b>-16,122.32</b>	<b>25,578.28</b>	<b>12,291.46</b>
<b>Net Income</b>	<b>-16,122.32</b>	<b>25,578.28</b>	<b>12,291.46</b>

**Meeker-McLeod-Sibley Community Health Services**  
**Grant Summary Report**  
**December 2022**

	234 - WIC Peer Grant	237 - Suicide Prevention Grant	306 - COV Vacc 3 (Fed Funding)
<b>Ordinary Income/Expense</b>			
<b>Income</b>			
5300 · State Grant	0.00	0.00	0.00
5413 · WIC Grant	0.00	0.00	0.00
5459 · WIC Peer Counseling - I	15,339.00	0.00	0.00
5990 · Refunds & Reimbursements	0.00	0.00	0.00
<b>Total Income</b>	<b>15,339.00</b>	<b>0.00</b>	<b>0.00</b>
<b>Expense</b>			
6105 · Salaries & Wages-FT	1,003.87	0.00	644.22
6110 · Salaries & Wages	0.00	0.00	401.78
6152 · HSA Insurance-County Share	0.00	0.00	0.00
6153 · Health & Life Ins-County Share	0.00	0.00	0.00
6154 · Contracted Services	0.00	400.00	0.00
6163 · PERA-County Share	0.00	0.00	0.00
6175 · FICA-County Share	66.78	0.00	76.27
6203 · Communications	254.25	0.00	0.00
6246 · Staff Development	0.00	0.00	0.00
6265 · Professional Services	5,280.68	0.00	0.00
6268 · Bank Service Fees & Charges	0.00	0.00	0.00
6269 · Payroll Services	0.00	0.00	0.00
6270 · IT Support	0.00	0.00	0.00
6335 · Mileage	0.00	0.00	0.00
6336 · Meals/Lodging/Parking & Misc.	0.00	0.00	0.00
6350 · Other Charges & Services	0.00	0.00	0.00
6360 · Training	0.00	0.00	0.00
6402 · Office Supplies	49.00	0.00	0.00
6403 · Supplies (non office)	0.00	0.00	0.00
6861 · WIC Peer Counseling CP	301.00	0.00	0.00
6865 · SHIP - County Payment	0.00	0.00	0.00
6877 · Workforce Development	0.00	0.00	0.00
<b>Total Expense</b>	<b>6,955.58</b>	<b>400.00</b>	<b>1,122.27</b>
<b>Net Ordinary Income</b>	<b>8,383.42</b>	<b>-400.00</b>	<b>-1,122.27</b>
<b>Net Income</b>	<b>8,383.42</b>	<b>-400.00</b>	<b>-1,122.27</b>

**Meeker-McLeod-Sibley Community Health Services**  
**Grant Summary Report**  
**December 2022**

01/10/23

Accrual Basis

	502 - Emergency Preparedness	505 - EP - CRI	Unclassified
<b>Ordinary Income/Expense</b>			
<b>Income</b>			
5300 · State Grant	0.00	0.00	0.00
5413 · WIC Grant	0.00	0.00	0.00
5459 · WIC Peer Counseling - I	0.00	0.00	0.00
5990 · Refunds & Reimbursements	0.00	0.00	0.00
<b>Total Income</b>	<b>0.00</b>	<b>0.00</b>	<b>0.00</b>
<b>Expense</b>			
6105 · Salaries & Wages-FT	3,990.59	1,002.12	0.00
6110 · Salaries & Wages	0.00	0.00	0.00
6152 · HSA Insurance-County Share	100.00	0.00	0.00
6153 · Health & Life Ins-County Share	948.38	0.00	0.00
6154 · Contracted Services	0.00	0.00	0.00
6163 · PERA-County Share	429.48	0.00	0.00
6175 · FICA-County Share	282.06	70.82	0.00
6203 · Communications	91.28	0.00	0.00
6246 · Staff Development	0.00	0.00	0.00
6265 · Professional Services	0.00	0.00	0.00
6268 · Bank Service Fees & Charges	0.00	0.00	0.00
6269 · Payroll Services	0.00	0.00	0.00
6270 · IT Support	0.00	0.00	0.00
6335 · Mileage	0.00	0.00	0.00
6336 · Meals/Lodging/Parking & Misc.	0.00	0.00	0.00
6350 · Other Charges & Services	0.00	0.00	0.00
6360 · Training	0.00	0.00	0.00
6402 · Office Supplies	0.00	0.00	0.00
6403 · Supplies (non office)	0.00	0.00	0.00
6861 · WIC Peer Counseling CP	0.00	0.00	0.00
6865 · SHIP - County Payment	0.00	0.00	0.00
6877 · Workforce Development	0.00	0.00	0.00
<b>Total Expense</b>	<b>5,841.79</b>	<b>1,072.94</b>	<b>0.00</b>
<b>Net Ordinary Income</b>	<b>-5,841.79</b>	<b>-1,072.94</b>	<b>0.00</b>
<b>Net Income</b>	<b>-5,841.79</b>	<b>-1,072.94</b>	<b>0.00</b>

**Meeker-McLeod-Sibley Community Health Services**  
**Grant Summary Report**  
**December 2022**

	TOTAL
Ordinary Income/Expense	
Income	
5300 · State Grant	30,789.89
5413 · WIC Grant	37,074.00
5459 · WIC Peer Counseling - I	15,339.00
5990 · Refunds & Reimbursements	4,193.12
Total Income	87,396.01
Expense	
6105 · Salaries & Wages-FT	29,404.61
6110 · Salaries & Wages	6,897.15
6152 · HSA Insurance-County Share	400.00
6153 · Health & Life Ins-County Share	2,821.00
6154 · Contracted Services	400.00
6163 · PERA-County Share	2,722.65
6175 · FICA-County Share	2,673.46
6203 · Communications	706.13
6246 · Staff Development	11,023.50
6265 · Professional Services	7,092.58
6268 · Bank Service Fees & Charges	18.95
6269 · Payroll Services	24.50
6270 · IT Support	16,908.41
6335 · Mileage	498.76
6336 · Meals/Lodging/Parking & Misc.	386.82
6350 · Other Charges & Services	6,650.47
6360 · Training	60.00
6402 · Office Supplies	145.28
6403 · Supplies (non office)	2,981.73
6861 · WIC Peer Counseling CP	301.00
6865 · SHIP - County Payment	9,997.08
6877 · Workforce Development	8,008.75
Total Expense	110,122.83
Net Ordinary Income	-22,726.82
Net Income	<b>-22,726.82</b>

11:06 AM

02/03/23

Accrual Basis

**Meeker-McLeod-Sibley Community Health Services**  
**Grant Summary Report**  
**January 2023**

	100 - Local Public Health Grant	107 - Workforce Development	205 - Follow Along
<b>Ordinary Income/Expense</b>			
<b>Income</b>			
5300 · State Grant	0.00	0.00	0.00
5338 · FPSP Grant	0.00	0.00	0.00
5345 · C&Tc State	0.00	0.00	0.00
5400 · Federal Grant	0.00	0.00	0.00
5413 · WIC Grant	0.00	0.00	0.00
5414 · MCH Grant	0.00	0.00	0.00
5422 · Child & Teen Checkups Grant	0.00	0.00	0.00
5428 · Follow Along Program	0.00	0.00	3,980.56
5990 · Refunds & Reimbursements	0.00	0.00	0.00
<b>Total Income</b>	<b>0.00</b>	<b>0.00</b>	<b>3,980.56</b>
<b>Expense:</b>			
6105 · Salaries & Wages-FT	7,702.05	2,142.41	0.00
6110 · Salaries & Wages	5,028.57	522.74	0.00
6152 · HSA Insurance-County Share	100.00	0.00	0.00
6153 · Health & Life Ins-County Share	560.94	0.00	0.00
6163 · PERA-County Share	1,197.30	0.00	0.00
6175 · FICA-County Share	973.88	203.90	0.00
6203 · Communications	51.23	0.00	0.00
6245 · Dues & Registrations Fees	85.00	0.00	0.00
6246 · Staff Development	0.00	0.00	0.00
6264 · PH.DOC Software	12,043.30	0.00	0.00
6265 · Professional Services	9,543.00	0.00	0.00
6269 · Payroll Services	26.25	0.00	0.00
6335 · Mileage	110.04	99.56	0.00
6350 · Other Charges & Services	0.00	5,000.00	0.00
6402 · Office Supplies	24.23	0.00	0.00
<b>Total Expense</b>	<b>37,445.79</b>	<b>7,968.61</b>	<b>0.00</b>
<b>Net Ordinary Income</b>	<b>-37,445.79</b>	<b>-7,968.61</b>	<b>3,980.56</b>
<b>Net Income</b>	<b>-37,445.79</b>	<b>-7,968.61</b>	<b>3,980.56</b>

11:06 AM

02/03/23

Accrual Basis

**Meeker-McLeod-Sibley Community Health Services**  
**Grant Summary Report**  
 January 2023

	206 - FPSP	209 - MCH	212 - Project Harmony Grant
<b>Ordinary Income/Expense</b>			
Income			
5300 · State Grant	0.00	0.00	0.00
5338 · FPSP Grant	10,770.08	0.00	0.00
5345 · C&Tc State	0.00	0.00	0.00
5400 · Federal Grant	0.00	0.00	0.00
5413 · WIC Grant	0.00	0.00	0.00
5414 · MCH Grant	0.00	23,569.00	0.00
5422 · Child & Teen Checkups Grant	0.00	0.00	0.00
5428 · Follow Along Program	0.00	0.00	0.00
5990 · Refunds & Reimbursements	0.00	0.00	0.00
<b>Total Income</b>	<b>10,770.08</b>	<b>23,569.00</b>	<b>0.00</b>
Expense			
6105 · Salaries & Wages-FT	0.00	0.00	3,590.40
6110 · Salaries & Wages	0.00	0.00	0.00
6152 · HSA Insurance-County Share	0.00	0.00	100.00
6153 · Health & Life Ins-County Share	0.00	0.00	717.36
6163 · PERA-County Share	0.00	0.00	269.28
6175 · FICA-County Share	0.00	0.00	270.98
6203 · Communications	0.00	0.00	51.23
6245 · Dues & Registrations Fees	0.00	0.00	0.00
6246 · Staff Development	0.00	0.00	164.80
6264 · PH.DOC Software	0.00	0.00	0.00
6265 · Professional Services	0.00	0.00	0.00
6269 · Payroll Services	0.00	0.00	0.00
6335 · Mileage	0.00	0.00	251.98
6350 · Other Charges & Services	0.00	0.00	50.83
6402 · Office Supplies	0.00	0.00	0.00
<b>Total Expense</b>	<b>0.00</b>	<b>0.00</b>	<b>5,466.86</b>
<b>Net Ordinary Income</b>	<b>10,770.08</b>	<b>23,569.00</b>	<b>-5,466.86</b>
<b>Net Income</b>	<b>10,770.08</b>	<b>23,569.00</b>	<b>-5,466.86</b>



11:06 AM

02/03/23

Accrual Basis

**Meeker-McLeod-Sibley Community Health Services**  
**Grant Summary Report**  
**January 2023**

	225 - WIC-Admin	230 - SHIP	234 - WIC Peer Grant
<b>Ordinary Income/Expense</b>			
<b>Income</b>			
5300 · State Grant	0.00	36,069.41	0.00
5338 · FPSP Grant	0.00	0.00	0.00
5345 · C&Tc State	0.00	0.00	0.00
5400 · Federal Grant	0.00	0.00	0.00
5413 · WIC Grant	81,859.00	0.00	0.00
5414 · MCH Grant	0.00	0.00	0.00
5422 · Child & Teen Checkups Grant	0.00	0.00	0.00
5428 · Follow Along Program	0.00	0.00	0.00
5990 · Refunds & Reimbursements	0.00	2,186.35	0.00
<b>Total Income</b>	<b>81,859.00</b>	<b>38,255.76</b>	<b>0.00</b>
<b>Expense</b>			
6105 · Salaries & Wages-FT	9,226.42	5,270.40	872.16
6110 · Salaries & Wages	0.00	0.00	0.00
6152 · HSA Insurance-County Share	100.00	0.00	0.00
6153 · Health & Life Ins-County Share	1,052.36	102.26	0.00
6163 · PERA-County Share	757.40	395.28	0.00
6175 · FICA-County Share	646.69	395.53	57.96
6203 · Communications	129.76	121.23	504.01
6245 · Dues & Registrations Fees	0.00	0.00	0.00
6246 · Staff Development	0.00	0.00	0.00
6264 · PH.DOC Software	0.00	0.00	0.00
6265 · Professional Services	0.00	0.00	2,422.79
6269 · Payroll Services	0.00	0.00	0.00
6335 · Mileage	24.89	54.37	0.00
6350 · Other Charges & Services	50.00	1,000.00	0.00
6402 · Office Supplies	0.00	0.00	8.99
<b>Total Expense</b>	<b>11,987.52</b>	<b>7,339.07</b>	<b>3,865.91</b>
<b>Net Ordinary Income</b>	<b>69,871.48</b>	<b>30,916.69</b>	<b>-3,865.91</b>
<b>Net Income</b>	<b>69,871.48</b>	<b>30,916.69</b>	<b>-3,865.91</b>

11:06 AM

02/03/23

Accrual Basis

**Meeker-McLeod-Sibley Community Health Services**  
**Grant Summary Report**  
**January 2023**

	237 - Suicide Prevention Grant	306 - COV Vacc 3 (Fed Funding)	502 - Emergency Preparedness
<b>Ordinary Income/Expense</b>			
Income			
5300 · State Grant	6,259.03	0.00	0.00
5338 · FPSP Grant	0.00	0.00	0.00
5345 · C&Tc State	0.00	0.00	0.00
5400 · Federal Grant	0.00	62,021.09	0.00
5413 · WIC Grant	0.00	0.00	0.00
5414 · MCH Grant	0.00	0.00	0.00
5422 · Child & Teen Checkups Grant	0.00	0.00	0.00
5428 · Follow Along Program	0.00	0.00	0.00
5990 · Refunds & Reimbursements	0.00	0.00	0.00
<b>Total Income</b>	<b>6,259.03</b>	<b>62,021.09</b>	<b>0.00</b>
Expense			
6105 · Salaries & Wages-FT	0.00	602.42	4,289.95
6110 · Salaries & Wages	0.00	568.20	0.00
6152 · HSA Insurance-County Share	0.00	0.00	100.00
6153 · Health & Life Ins-County Share	0.00	0.00	1,002.98
6163 · PERA-County Share	0.00	0.00	438.12
6175 · FICA-County Share	0.00	86.78	308.38
6203 · Communications	0.00	0.00	91.24
6245 · Dues & Registrations Fees	0.00	0.00	0.00
6246 · Staff Development	0.00	0.00	0.00
6264 · PH.DOC Software	0.00	0.00	0.00
6265 · Professional Services	0.00	0.00	0.00
6269 · Payroll Services	0.00	0.00	0.00
6335 · Mileage	0.00	0.00	0.00
6350 · Other Charges & Services	0.00	907.00	0.00
6402 · Office Supplies	0.00	0.00	0.00
<b>Total Expense</b>	<b>0.00</b>	<b>2,164.40</b>	<b>6,230.67</b>
<b>Net Ordinary Income</b>	<b>6,259.03</b>	<b>59,856.69</b>	<b>-6,230.67</b>
<b>Net Income</b>	<b>6,259.03</b>	<b>59,856.69</b>	<b>-6,230.67</b>

11:06 AM  
02/03/23  
Accrual Basis

# Meeker-McLeod-Sibley Community Health Services

## Grant Summary Report

January 2023

	505 - EP - CRI	601 - Child & Teen Checkups	Unclassified
<b>Ordinary Income/Expense</b>			
Income			
5300 · State Grant	0.00	0.00	0.00
5338 · FPSP Grant	0.00	0.00	0.00
5345 · C&Tc State	0.00	38,025.48	0.00
5400 · Federal Grant	0.00	0.00	0.00
5413 · WIC Grant	0.00	0.00	0.00
5414 · MCH Grant	0.00	0.00	0.00
5422 · Child & Teen Checkups Grant	0.00	38,025.48	0.00
5428 · Follow Along Program	0.00	0.00	0.00
5990 · Refunds & Reimbursements	0.00	0.00	0.00
<b>Total Income</b>	<b>0.00</b>	<b>76,050.96</b>	<b>0.00</b>
Expense			
6105 · Salaries & Wages-FT	949.26	0.00	0.00
6110 · Salaries & Wages	0.00	0.00	0.00
6152 · HSA Insurance-County Share	0.00	0.00	0.00
6153 · Health & Life Ins-County Share	0.00	0.00	0.00
6163 · PERA-County Share	0.00	0.00	0.00
6175 · FICA-County Share	68.24	0.00	0.00
6203 · Communications	0.00	0.00	0.00
6245 · Dues & Registrations Fees	0.00	0.00	0.00
6246 · Staff Development	0.00	0.00	0.00
6264 · PH.DOC Software	0.00	0.00	0.00
6265 · Professional Services	0.00	0.00	0.00
6269 · Payroll Services	0.00	0.00	0.00
6335 · Mileage	0.00	0.00	0.00
6350 · Other Charges & Services	0.00	0.00	0.00
6402 · Office Supplies	0.00	0.00	0.00
<b>Total Expense</b>	<b>1,017.50</b>	<b>0.00</b>	<b>0.00</b>
<b>Net Ordinary Income</b>	<b>-1,017.50</b>	<b>76,050.96</b>	<b>0.00</b>
<b>Net Income</b>	<b>-1,017.50</b>	<b>76,050.96</b>	<b>0.00</b>

11:06 AM

02/03/23

Accrual Basis

**Meeker-McLeod-Sibley Community Health Services**  
**Grant Summary Report**  
January 2023

	<u>TOTAL</u>
<b>Ordinary Income/Expense</b>	
Income	
5300 · State Grant	42,328.44
5338 · FPSP Grant	10,770.08
5345 · C&Tc State	38,025.48
5400 · Federal Grant	62,021.09
5413 · WIC Grant	81,859.00
5414 · MCH Grant	23,569.00
5422 · Child & Teen Checkups Grant	38,025.48
5428 · Follow Along Program	3,980.56
5990 · Refunds & Reimbursements	2,186.35
<b>Total Income</b>	<b>302,765.48</b>
Expense	
6105 · Salaries & Wages-FT	34,645.47
6110 · Salaries & Wages	6,119.51
6152 · HSA Insurance-County Share	400.00
6153 · Health & Life Ins-County Share	3,435.90
6163 · PERA-County Share	3,057.38
6175 · FICA-County Share	3,012.34
6203 · Communications	948.70
6245 · Dues & Registrations Fees	85.00
6246 · Staff Development	164.80
6264 · PH.DOC Software	12,043.30
6265 · Professional Services	11,965.79
6269 · Payroll Services	26.25
6335 · Mileage	540.84
6350 · Other Charges & Services	7,007.83
6402 · Office Supplies	33.22
<b>Total Expense</b>	<b>83,486.33</b>
<b>Net Ordinary Income</b>	<b>219,279.15</b>
<b>Net Income</b>	<b>219,279.15</b>



**Public Health**  
Prevent. Promote. Protect.

**Meeker McLeod Sibley**  
Community Health Services

# Meeker-McLeod-Sibley Community Health Services

114 N Holcombe Ave, Litchfield, Minnesota 55355  
Main Line (320)693-5370

## RESOLUTION 2023-1

### Meeker-McLeod-Sibley Community Health Board

The Meeker-McLeod-Sibley Community Health Board by virtue of its authority under Minnesota Statutes 145A, in accordance with the Board's Operating Procedures, and by this Resolution of the Board adopted at a scheduled meeting on March 9th, 2023 hereby appoints and authorizes the following persons to act on the Board's behalf and bind the board for the following purposes(s):

- A. To serve as the Board's authorized agent according to MN Statutes 145A, in communicating with the Commissioner of Health between Board meetings, including receiving information from the Commissioner and disseminating that information to the Board, as well as providing information to the Commissioner on the Board's behalf.
- B. To sign and execute, on behalf of the Board, contracts for funding and other administrative items under the following grant contracts administered by the Commissioner of Health or other granting agencies:
- Local Public Health Grant
  - Maternal and Child Health Formula Special Project Grant (MCH) (MDH)
  - TANF Home Visiting (MDH)
  - Special Supplemental Food Program for Women, Infants, and Children (WIC) (MDH)
  - Family Planning Special Project Grant (FPSPG) (MDH)
  - Child and Teen Check-ups Administrative Services, (DHS)
  - Public Health Emergency Preparedness Grant (MDH)
  - Project Harmony-DHS
  - COVID Grant – MDH
  - Health Equity Grant – MDH
  - Newborn Hearing Screening - MDH
  - Statewide Health Improvement Grant – MDH
  - Healthy Homes
  - Other grants/contracts and budgets

**Name:** Kiza Olson, CHS Administrator

**Address:** 114 N. Holcombe Ave, STE 250, Litchfield, MN 55355

**Telephone:** (W): (320)-510-1319

This resolution authorizes the above-referenced appointees to act on behalf of, and bind, the Board to the extent, and for the purposes, indicated in this Resolution.

Signed: \_\_\_\_\_

3/9/2023

Chairperson, Community Health Board

Date

**Meeker County**  
114 N Holcombe Ave #250  
Litchfield, MN 55355  
(320) 693-5370

**McLeod County**  
520 Chandler Ave North  
Glencoe, MN 55336 33  
(320) 864-3185

**Sibley County**  
111 8<sup>th</sup> Street; PO Box 237  
Gaylord, MN 55334  
(507) 237-4000





**Public Health**  
Prevent. Promote. Protect.

**Meeker McLeod Sibley**  
Community Health Services

# Meeker-McLeod-Sibley Community Health Services

114 N Holcombe Ave, Litchfield, Minnesota 55355  
Main Line (320)693-5370

## RESOLUTION 2023-2

### Meeker-McLeod-Sibley Community Health Board

The Meeker-McLeod-Sibley Community Health Board (MMS CHB) by virtue of its authority under Minnesota Statutes 145A, in accordance with the Board's Joint Powers Agreement and By-Laws, and by this Resolution of the Board adopted at a scheduled meeting on March 9, 2023 hereby designates Security Bank and Trust Company, Glencoe as the official bank of the MMS CHB.

**Security Bank and Trust Co.**  
**735 11<sup>th</sup> St. E**  
**Box 218**  
**Glencoe MN 55336**  
**(320) 864-3171**

The Meeker-McLeod-Sibley Community Health Board designates the following employees' authority and access to the bank account, including on-line access in order to conduct financial transactions and employee services required for agency operations, according to regulatory requirements.

**Name:** Kiza Olson, Administrator  
**Address:** 114 N. Holcombe #250, Litchfield MN 55355  
**Telephone:** (W): (320) 510-1319

**Name:** Diane Winter, Meeker County Public Health Director  
**Address:** 114 N. Holcombe #250, Litchfield MN 55355  
**Telephone:** (W): (320) 693-5370

This resolution authorizes the above-referenced appointees to act on behalf of, and bind, the Board to the extent, and for the purposes, indicated in this Resolution.

Signed: \_\_\_\_\_

Meeker-McLeod-Sibley Community Health Board Chair

3/9/2023

Date



**Conflict of Interest Policy**  
**Meeker-McLeod-Sibley Community Health Services**

An official shall not engage in any official duties, private enterprise, participate in any professional activity or perform any act or service during or outside their official duties with the Community Health Services, which would affect the official's ability to perform the normal duties and responsibilities of their position, or which is adverse to the interests of Meeker-McLeod-Sibley Community Health Services. In determining whether such outside official duties or activities for private gain constitute a conflict of interest with public duties, or are inconsistent or incompatible with the public official duties, the following shall be considered;

1. The performance of an act in other than the capacity as an official which may later act directly to the control, inspection, review, audit or enforcement by said official for the Community Health Services is prohibited
2. The use of Community Health Services time, facilities, equipment and supplies or the badge, uniform, prestige or influence of Community Health Services official duties for private gain.
3. Receipt or acceptance by the official of any money or other consideration from anyone other than the Community Health Services for the performance of an act which the official would be required or expected to perform in the regular course of the official's official duties, or as part of their duties as an official.
4. Officials participating in compensated or non-compensated activities/volunteer work are encouraged to continue in such participation. If an official is participating in any compensated or non-compensated activity that may cause a conflict, the official should discuss the potential conflict with the Community Health Board, whose decision shall be final.
5. Failure to follow this policy by the Community Health Services Coordinator or Fiscal Officer may result in termination of the contract between the Community Health Board and the Coordinator or Fiscal Officer.
6. The Meeker-McLeod-Sibley Community Health Services Conflict of Interest Policy shall be reviewed yearly by the Elected Officials of the Community Health Board, the Community Health Services Coordinator and Fiscal Officer. The Original Statement of Conflict of Interest shall be signed yearly by the Elected Officials of the Community Health Board, the Community Health Services Coordinator and Fiscal Officer.

Approved 12-14-98  
Meeker-McLeod-Sibley Community Health Board

**Original Statement of Conflict of Interest**  
Local Official for Meeker-McLeod-Sibley Community Health Services

**Instructions**

- \* This statement must be completed by each local official, it must be signed and dated. The signature indicates that the official understands and agrees to the Meeker-McLeod-Sibley Community Health Services Conflict of Interest Policy.
- \* This statement is due to the Community Health Services Coordinator within 80 days after undertaking duties of office.
- \* This statement may *not* be filed electronically.
- \* All information on this statement is public information.
- \* It is unlawful to use this information for commercial purposes.
- \* Address questions to the Meeker-McLeod-Sibley Community Health Services Coordinator

**Local Official**

Name	Title of office held
Government Unit	Telephone (daytime)
Address	
City, State, Zip	
Occupation	Principal place of business

**Period Covered**

January 1, 2023 \_\_\_\_\_ to December 31, 2023 \_\_\_\_\_

**Certification**

I, \_\_\_\_\_, certify that I have read, understand and agree to the  
(Print or type name)

Meeker-McLeod-Sibley Community Health Services Conflict of Interest Policy, and am aware of no current conflict of interest with my present official position. I agree to make the Meeker-McLeod-Sibley Community Health Board aware if any potential conflict of interest develops.

\_\_\_\_\_  
Signature of Local Official

Any person who signs and certifies to be true a statement which the person knows contains false information, or who knowingly omits required information, is guilty of a gross misdemeanor.





# Meeker-McLeod-Sibley Community Health Services

114 N Holcombe Ave, Litchfield, Minnesota 55355  
Main Line (320)693-5370

## Meeker-McLeod-Sibley Community Health Board

### Medical Consultant Contract

THIS CONTRACT, which shall be interpreted pursuant to the laws of Minnesota, entered into and executed this 11th day of January, 2023, between the Meeker-McLeod-Sibley Community Health Board (hereinafter BOARD) and Cassandra Bulau, M.D. of the County of Meeker and State of Minnesota (hereinafter MEDICAL CONSULTANT), witness that:

WHEREAS, the BOARD has general authority and responsibility for the development and maintenance of an integrated system of community health services pursuant to Minnesota Statutes 145A.04, and

WHEREAS, the BOARD has responsibility to and shall ensure responsible medical consultation and direction by employing or contracting with a practicing licensed physician pursuant to Minnesota Statutes 145A.04, services and duties set forth therein.

NOW THEREFORE it is agreed:

#### 1. MEDICAL CONSULTANT'S DUTIES

The MEDICAL CONSULTANT shall insure responsible medical consultation and direction for the Meeker-McLeod-Sibley Community Health Board and those activities which are part of this total Community Health Services Plan (CHS). These functions shall include:

1. Participation in local Community Health Services planning and policy development.
2. Promotion of Community Health Services development
3. Consultation and maintenance to the BOARD and Advisory Committees in developing the medical aspects of community health programs.
4. Assistance in formulation and maintenance of standards on medical care aspects of CHS programs.
5. Liaison between the BOARD and practicing physicians in the community to develop understanding of CHS and to promote preventive health programs.

Physician functions include traditional physician functions defined by Minnesota Statutes and federal or local legislation where applicable. These functions include:

1. Medical responsibilities in disease control and prevention.
2. Medical responsibilities in consultation and assistance to immunization, lactation consultant, screening and other community clients.
3. Minimal supervisory responsibilities in medically delegated functions as defined by the Medical Practices Act and Nursing Practices Act. Implementation is determined by local policies for standing orders and backup procedures.

Meeker County  
114 N Holcombe Ave #250  
Litchfield, MN 55355  
(320) 693-5370

McLeod County  
520 Chandler Ave North  
Glencoe, MN 55336  
(320) 864-3185

Sibley County  
111 8th Street; PO Box 237  
Gaylord, MN 55334  
(507) 237-4000



## II. TERM OF CONTRACT

This contract shall be effective on the 11<sup>th</sup> day of January, 2023 and terminate at the request of either party.

## III. CONSIDERATION, TERMS AND CONDITIONS OF PAYMENT

A. Consideration for all services and duties performed and goods or materials supplied by the MEDICAL CONSULTANT pursuant to this contract shall be requested and paid by the BOARD and/or staff as follows:

1. Compensation for service actually and necessarily performed by the MEDICAL CONSULTANT in performance of this contract as requested or delegated.
2. Reimbursement for travel and subsistence expenses actually and necessarily incurred by the MEDICAL CONSULTANT in performance of this contract.

B. Terms of payment.

1. Payment for compensation shall be made by the BOARD to the MEDICAL CONSULTANT at an hourly rate of \$75.00 (seventy-five dollars) per hour and the currently approved mileage rate for travel expenses.
2. Per diem and travel expenses for official attendance at BOARD meetings and its committees shall be at the current rate established by the BOARD.
3. Payment for compensation and/or reimbursement of expenses shall be made by the BOARD promptly after the MEDICAL CONSULTANT'S presentation of receipts and other documentation of services and/or expenses actually and necessarily performed and incurred.

C. Conditions of Payment.

All services and duties performed by the MEDICAL CONSULTANT pursuant to this contract shall be performed to the satisfaction of the BOARD and in accord with all application federal, state local laws, ordinance and rules and regulations as a condition of payment.

## IV. STANDARDS AND LICENSES

- A. The MEDICAL CONSULTANT warrants and represents that he/she is currently licensed as a medical doctor by the State of Minnesota. In the event said license is cancelled, revoked, suspended, or expires during the term of the contract, MEDICAL CONSULTANT agrees to immediately inform the Board. The Board will pay only for services provided pursuant to such licensing requirements.
- B. The MEDICAL CONSULTANT shall comply with all applicable federal and state statutes and regulations as well as local ordinances now in effect or hereafter adopted.
- C. Failure to meet the requirements of Sections A and B above may be cause for cancellation of this contract effective the date of receipt of the Notice of Cancellation.

## V. INDEPENDENT CONTRACTOR

It is agreed that nothing herein contained is intended or should be construed in any manner as creating or establishing the relationship of co-partners between the parties hereto or as constituting the MEDICAL CONSULTANT as the agent, representative, or employee of the BOARD for any purpose or in any manner whatsoever. The MEDICAL CONSULTANT is to be and shall remain an independent contractor with respect to all services performed under this Agreement.

## VI. INSURANCE

Medical Consultant agrees to obtain and maintain professional liability insurance coverage in a minimum amount of \$1,500,000 per claimant for personal injuries, bodily injuries, death, and/or damages, and \$1,500,000 for total personal injuries, bodily injuries, death, and/or damages arising from one occurrence. The Board will be named as an additional insured.

## VII. SUBCONTRACTING AND ASSIGNMENTS

The MEDICAL CONSULTANT shall not enter into any subcontract for performance of any of the services contemplated under this contract nor assign any interests in the contract without the prior written approval of the BOARD and subject to such conditions and provisions as the BOARD may deem necessary.

## VIII. DATA PRIVACY

- A. All data collected, created, received, maintained, or disseminated, or used for any purposes in the Court of the MEDICAL CONSULTANT'S is governed by the Minnesota Government Data Practices Act., Minn. Stat. Ch. 13., or any other applicable state statutes and any state rules adopted to implement the Act, as well as state statutes and federal regulations on data privacy. The MEDICAL CONSULTANT agrees to abide by the Statutes, rules, and regulations as they may be amended.

## IX. CANCELLATION

This contract may be cancelled by the BOARD or MEDICAL CONSULTANT at any time, with or without cause, upon sixty (60) days written notice to the other party. In the event of such cancellation, the MEDICAL CONSULTANT shall be entitled to payment determined in a prorated basis for services and duties satisfactorily performed.

## X. MODIFICATIONS

Any material alteration, modification, or variation shall be reduced to writing as an amendment and signed by the parties. Any alternations, modifications, or variations deemed not to be material by agreement of the BOARD and MEDICAL CONSULTANT shall not require written approval.

Medical Consultant:

Signature: Cassandra Belau, MD

Printed Name: Cassandra Belau, MD Date: 1/18/2023

Meeker-McLeod-Sibley Community Health Board Chair:

Signature: \_\_\_\_\_

Printed Name: \_\_\_\_\_ Date: \_\_\_\_\_

Meeker-McLeod-Sibley Community Health Services Administrator:

Signature: \_\_\_\_\_

Printed Name: \_\_\_\_\_ Date: \_\_\_\_\_

---

Meeker County  
114 N Holcombe Ave #250  
Litchfield, MN 55355  
(320) 693-5370

McLeod County  
520 Chandler Ave North  
Glencoe, MN 55336  
(320) 864-4085

Sibley County  
111 8<sup>th</sup> Street; PO Box 237  
Gaylord, MN 55334  
(507) 237-4000



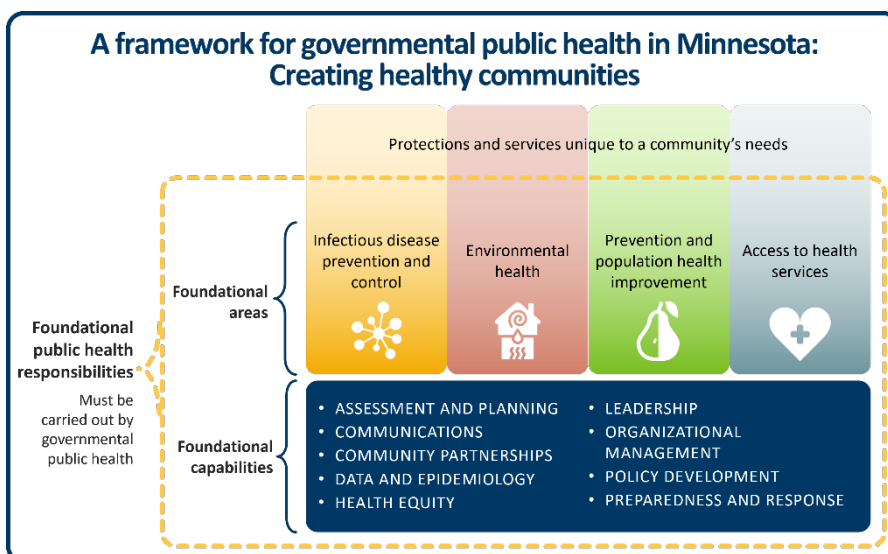
# Transforming Minnesota's Public Health System for the 21<sup>st</sup> Century: Report to the Legislature: Executive Summary for SCHSAC

## Public health is essential for building healthy, vibrant communities

- The communities where people live provide the building blocks for long-term health and well-being – such as protection from the spread of infectious diseases and environmental threats, clean water, strong schools, sustaining jobs, community connectedness, access to health care, and other important community supports.
- Minnesota's governmental public health system, working together with community partners, plays an important part in creating and sustaining healthy communities by providing certain foundational responsibilities. (Shown at right):

## A committed, equal partnership for change

- Minnesota's public health leaders share an important core value: no matter where someone lives, they should have the same public health protections, and the same opportunity to achieve their best health. The Minnesota Department of Health (MDH), the Local Public Health Association of Minnesota (LPHA), and the State Community Health Services Advisory Committee (SCHSAC) are all committed to strengthening the statewide public health system together.



## Public health capacity and expertise varies across our state

- In 2022, the University of Minnesota (UMN) Center for Public Health Systems helped MDH and local health departments in Minnesota assess their implementation of foundational public health responsibilities. This assessment shows that capacity to carry out these responsibilities varies widely across the state, creating a patchwork quilt of capabilities where the people of Minnesota do not equally share the same access to basic health protections.
- Each row in the figure represents a local health jurisdiction or MDH. Each column shows that jurisdiction's ability to assure foundational public health responsibilities.

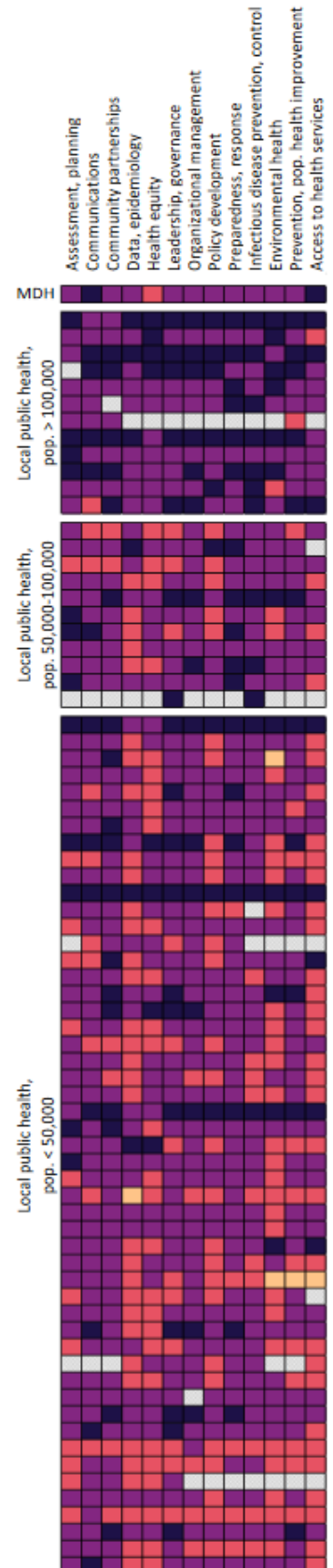
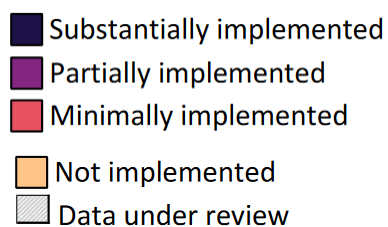
## TRANSFORMING MINNESOTA'S PUBLIC HEALTH SYSTEM FOR THE 21<sup>ST</sup> CENTURY: EXECUTIVE SUMMARY FOR SCHSAC

- Dark indigo squares signal that a local health department, or in some cases its community partners, has the capacity and expertise to substantially implement the corresponding foundational responsibility. The lighter the square, the less the jurisdiction has capacity in that responsibility.
- The UMN Center for Public Health Systems will produce a final, more extensive report on capacity and expertise in summer 2023.
- The tools and structure of Minnesota's public health system, based upon the Local Public Health Act (Minn. Stat. § 145A) of 1976, have been stretched to the limit.
- Total local public health FTEs (full-time equivalents) fell sharply from 2008 to 2012 and remains historically low. Minnesota's public health system is relying on a smaller workforce to carry the full weight of today's responsibilities.
- Rather than as an integrated system between levels of government, public health in Minnesota acts a collection of separate entities under considerable strain from expanding expectations and reduced resources.

### A call for sustained support, engagement, resources, and accountability

- The team jointly leading this effort (MDH, LPHA, and SCHSAC) should be directed to continue to build a public health system that works for every community and provide regular briefings to the Legislature.
- State and federal governments should provide the resources to assure foundational public health responsibilities are in place across the state, while allowing flexibility for communities to address local priorities.
- Continue to support planning, relationship building, and testing new models as we work toward an integrated statewide public health system that best meets its obligations to the people of Minnesota.

Minnesota Department of Health  
Center for Public Health Practice  
PO Box 64975  
St. Paul, MN 55164-0975  
651-201-3880  
[health.ophp@state.mn.us](mailto:health.ophp@state.mn.us)  
[www.health.state.mn.us](http://www.health.state.mn.us)



January 2023

To obtain this information in a different format, call: 651-201-3880.

## **EMPLOYEE OWNED CELL PHONES**

Employees that have been designated to receive a cell phone allowance will receive a monthly allowance based on the following tier plan:

<b>Tier 1</b>	<b>\$30.00/month</b>	Average of over 100 minutes work related use per month in a 6 month period
<b>Tier 2</b>	<b>\$50.00/month</b>	Smartphone with data access

Employees receiving the allowance are responsible for:

1. Smartphone devices permitted as defined by the Acceptable Use for Computer and Network Systems section of the Meeker-McLeod-Sibley Community Health Services Personnel Policy.
2. Providing proof of purchase/lease of cell service and work related usage at intervals to be determined by the Department Head.
3. Replacement or repair of the phone will normally be the responsibility of the employee. However, if the cell phone is lost or damaged as a direct result of the work environment, the Department Head with the Meeker-McLeod-Sibley Community Health Services Administrator's approval may approve reimbursement to the employee.
4. Employees will make sure the cellular service is reliable in Meeker-McLeod-Sibley Community Health Services.

The cell phone allowance is intended to cover most of the costs of the employee's cell phone expenses related to work duties. Initial purchase of the cell phone, accessory equipment, and activation fees will be the responsibility of the employee. The employee will pay any costs exceeding the amount of the cell phone allowance to the cell phone service provider. No allowance will be paid when an employee is in an unpaid leave status or non- work status.

The cell phone allowance will be paid through the McLeod County's payroll system as taxable income. The allowance will be divided and paid with the 1<sup>st</sup> and 2<sup>nd</sup> payroll periods of the month for the previous month's service.

## **DATA PRACTICES**

All personal cell phone statements are considered private data. Billings associated with a McLeod County-purchased/leased cell phone are considered public data.

## **SUPERVISOR RESPONSIBILITY**

Department Heads and/or Supervisors shall monitor the cell phone needs and usage for their staff and make appropriate decisions and authorizations based on this policy and what is in the best interest of the Meeker-McLeod-Sibley Community Health Services. The Meeker-McLeod-Sibley Community Health Services Administrator is responsible for making decisions when it involves exceptions, discrepancies or interpretations of this policy.

## **CELL PHONE USAGE IN VEHICLES**

When driving a McLeod County vehicle, employees shall be aware that driving is their primary responsibility and cell phone usage is prohibited. Employees are required to pull off the road safely and be parked in a safe location before making or answering a call. The Sheriff's Office may promulgate supplemental policies which will supersede the application of this section to licensed law enforcement employees.

## **PERSONAL CELL PHONE USAGE IN THE WORK PLACE**

While at work employees are expected to exercise the same discretion in using personal cell phones as is expected for the use of Meeker-McLeod-Sibley Community Health Services issued cell phones. Excessive personal calls during the work day, regardless of the phone used, can interfere with employee productivity and be distracting to others. Employees are to make personal calls before and after work and during break and lunch periods. Employees are required to keep phones on silent or vibrate mode while in Meeker-McLeod-Sibley Community Health Services buildings.



CELL PHONE ALLOWANCE AUTHORIZATION  
(Use for Employee owned cell phone)

EMPLOYEE NAME: \_\_\_\_\_

DEPARTMENT: \_\_\_\_\_

Authorization relating to cell phone allowance to this employee as indicated below:

☐ Activate allowance payment @ \$30.00 per month (average of over 100 minutes of work related usage per month)

☐ Activate allowance payment @ \$50.00 per month for smartphone usage

☐ Deactivate allowance payment. Deactivation date \_\_\_\_\_

Service Provider's Name: \_\_\_\_\_

Cell Phone #: \_\_\_\_\_

*Allowance is intended to provide payment toward the cost of monthly service and associated taxes.*

\_\_\_\_\_  
Employee Signature

\_\_\_\_\_  
Date

\_\_\_\_\_  
Department Head Signature

\_\_\_\_\_  
Date

\_\_\_\_\_  
Administration

\_\_\_\_\_  
Date

Return this completed form to the Auditor-Treasurer Office. A copy will be kept in your personnel file in the Auditor-Treasurer Office.

Please allow time for processing to coincide with payroll periods.

\_\_\_\_\_  
Payroll/Benefit Coordinator

\_\_\_\_\_  
Date

MEEKER-MCLEOD-SIBLEY COMMUNITY  
HEALTH SERVICES CELL PHONE  
ALLOWANCE AGREEMENT

I agree to the following regulations regarding the payment of a cell phone allowance to me:

1. I understand that I will be authorized a cell phone allowance to be used toward the costs of cell phone service to be used for Meeker-McLeod-Sibley Community Health Service sbusiness purposes.
2. I understand that this allowance will be paid to me through payroll as taxable income.
3. I understand that I will be required to provide reliable cell phone service for all work related needs.
4. I agree to provide documentation to my department head as required to initiate and to continue my entitlement to the cell phone allowance.
5. I agree to monitor my work related usage and notify my Department Head if a tier change is necessary based on a 6 month average.
6. I understand my entitlement to the cell phone allowance ceases if I am in an unpaid leave status.
7. I understand my entitlement to the cell phone allowance ceases if I am in a non-working status (Ex: FMLA, work comp)
8. I understand the cell phone allowance will cease immediately upon my termination of employment, whether for retirement, voluntary or involuntary reasons. Should I terminate employment mid-month, I understand the allowance will be pro-rated.
9. I understand that any current or future obligation with the cell phone service provider is exclusively my responsibility without any liability to Meeker-McLeod-Sibley Community Health Services.

10. I have read and will follow the Meeker-McLeod-Sibley Community Health Services Cell Phone Usage Policy. Failure to comply with this agreement

Adopted by MMS CHB October 9, 2014

may result in cancellation of my entitlement to receipt of the cell phone allowance.

\_\_\_\_\_  
Employee Name (Print)

\_\_\_\_\_  
Employee Signature

\_\_\_\_\_  
Date

MARCH 2023

# MEEKER-MCLEOD-SIBLEY

## SHIP Highlights

### Partnering for Success

The 2021-2022 Statewide Health Improvement Partnership (SHIP) grant came and went in a flash but there were plenty of partnerships formed and strengthened. Our Meeker-McLeod-Sibley SHIP Team, consisting of Pam Bagley, Brett Nelson, Jayme Krauth, and Vlada Gladis, have been hard at work throughout the grant year working on exciting projects.

Through SHIP, our staff partner with communities, schools, worksites, and healthcare organizations to help ensure that all people have access to opportunities that enable them to live longer, healthier lives. We have the opportunity to improve the communities in a three county region. Throughout the newsletter, you'll be able to see a few of the impacts we were able to have this past year. Enjoy!



### This issue:

#### Partnering for Success

PAGE 01

#### Sharing Garden in Grove City

PAGE 02

#### Learn to Ride Bike Fleet

PAGE 03

#### Adaptive Bikes in Sibley County

PAGE 04

#### Community Garden in Brownton

PAGE 05

#### Building on Success

PAGE 06





## Grove City Sharing Garden

Seeing a need for local, fresh, organic produce in our low-income community, the idea for a community garden emerged. The Sharing Garden is a collective garden planted, nurtured, harvested, and shared within Meeker County. In partnership with SHIP (Statewide Health Improvement Partnership), the SW MN Synod of the ELCA, local churches, and local civic organizations, a coalition of community members cultivated a garden that is sustained and nurtured by community volunteers. The goals for this garden are to provide fresh produce at no cost to the community, enhance community health, and to educate about healthy eating and sustainable gardening methods. "Strong communities are built through people of all ages having spaces to come together and work toward a common cause." The Sharing Garden created a new space for community members to build positive relationships and bring awareness to an important community issue.

Each week, two food distributions were held in the parking lot of Trinity Lutheran Church in Grove City, which shares a side with Highway 12. Produce was organized on a beautiful wheeled vegetable cart, which was built by a local Boy Scout for his Eagle project. Over 100 families visited the cart, often two times weekly, to access food. As the summer progressed, the cart became not only a place to pick up vegetables, but also a reliable place to connect and converse with others.

Throughout the 2022 growing season, 46 volunteers from ages 3-92, have come forward to help with jobs from garden planning, publicizing, planting, harvesting, teaching food preservation courses, delivering needed supplies, manning the vegetable cart, making donations, writing grants and more! A sauerkraut making class was hosted and attended by 13 people. The organizers of the Grove City Sharing Garden plan to host more classes pertaining to using different foods and sustainable gardening practices throughout the year.

In addition to nourishing people, the garden is nourishing the earth. The goal of making the garden a raised row no till space was accomplished this fall. This means the garden will increase in fertility naturally and sustainably over the years, and due to ongoing mulching will be a relatively weed free garden that will be a very productive and beautiful place to work and grow food!

**"Strong  
communities are  
built through  
people of all ages  
having spaces to  
come together  
and work toward  
a common cause"**

-MARCIA BROWN







**"Keep an eye out for the 'can't miss' colorful bike fleet to be driving around Meeker, McLeod, and Sibley Counties this year!"**



## Learn To Ride Bike Fleet

Meeker McLeod Sibley (MMS) was fortunate to have extra carry-over funding from previous COVID years. This created an opportunity for MMS SHIP staff to devote extra dollars for community projects, thus the idea of putting together a bike fleet was born. MMS SHIP staff that work on the Active Living Strategy, are a part of the Hutchinson Bike and Pedestrian Committee. The bike fleet idea was brought up in a quarterly meeting and the project was taken by storm. The City of Hutchinson agreed to be the host for the trailer and bikes.

The city of Hutchinson is a great central location to host the bike fleet as we are in a three county CHB (Community Health Board for MMS CHS). The city of Hutchinson Parks Department has agreed to host the bike fleet, transport the bike fleet, and maintain the bike fleet. The bike fleet trailer is currently being assembled with the finishing touches and will be off and running for the spring of 2023. There will be 40 bikes that vary in size and will be used for 3rd-8th grade students in schools across all three counties.

During the fall of 2022, there were 10 educators who attended the Walk! Bike! Fun! Curriculum held by BikeMN. This will allow those who participated to use the bike fleet with their classrooms. Hutchinson Middle School was able to do a pilot run this fall and it was a great success. The middle school staff said they really wanted to keep the bikes all to themselves.

The final steps of finishing the bike fleet so it's ready for Spring 2023 include: installing bike hooks for inside the trailer, storage bins inside the trailer, installing helmet rack, setting up a calendar for schools to pick one or two week period of time, and any other rental agreement documents/surveys needed for each school during the rental period. Keep an eye out for the 'can't miss' colorful bike fleet to be driving around Meeker, McLeod, and Sibley Counties this year!





## Adaptive Bikes

In 2022, Sibley County School Districts were granted three new adaptive bikes for children with special needs through the MMS CHS SHIP Grant. Since receiving the bikes at the end of last school year, they have helped multiple students with disabilities. One school, in particular, is extremely thankful for this opportunity. Not only are the bikes important for improving overall strength and endurance, but for one student, they have improved his independence, increased his confidence, and given him a new way to express himself and do something he loves in school while being physically active with his peers. Initially, the student needed assistance with getting the bike moving and steering. Today, he is able to initiate the bike independently, steer, back up to park, and do a “Y turn” all on his own! All staff involved with this student can not say enough gratitude and express the happiness it has brought him and the other students that utilize them. The students all look forward to riding them and having so much fun. The smiles on their faces say it all. We, as physical therapists, are so grateful and thankful for the opportunity given to these districts to be able to spark light and create joy and happiness in children who need it. We can help them be successful, confident, and independent both physically and emotionally. Thank you SHIP!

-River Bend Education District, Physical Therapy Department

**"The smiles  
on their  
faces say it  
all"**

-RIVER BEND PHYSICAL  
THERAPIST



RIVER BEND  
EDUCATION DISTRICT







**"Residents are excited to see opportunities the community garden brings for years to come"**

## Brownton Community Garden

In January 2022, McLeod SHIP staff was connected with an avid gardener from Brownton with “hopes and dreams” of starting a community garden. Brownton is a small city in McLeod County with a population of 722. It is located right off of highway 212 on the west side of McLeod County. Brownton has no access to purchase fresh fruits and vegetables within city limits and residents must travel over 10 miles to have access to a grocery store. The community was seeing a need and the avid gardener stepped up to make things happen. A small community group was formed with the desire to start a community garden and meetings with local city staff and SHIP staff took place. In February 2022, the Brownton Community Garden committee presented the idea to the Brownton City Council. The City Council was immediately engaged and loved the idea of creating a community garden for residents to access. Residents would be able to rent a plot in the garden for a small fee and the city was willing to donate land and water for residents to use. This would provide residents who were not able to use their own property, or rented property, the opportunity to garden.

Plans came together quickly and development of the garden plots started in April of 2022. Commitment was secured from interested gardeners and policies were developed. By mid May, planting had begun. The Brownton Community Garden had a very successful first year. Not only did participating community members have access to grow their own produce, the abundance of fresh fruits and vegetables provided gardeners with the opportunity to donate fresh produce to the local food shelf. A “sharing stand” was also built on the garden property for extra produce to be shared with other community members. Plans are underway for the 2023 season including expansion to include raised garden beds for those residents who are not able to be on the ground as well as fruit trees. With improved access to fruits and vegetables, evidence shows increased consumption of fruits and vegetables benefiting diet. Community gardens also provide additional physical activity options for participants benefiting overall health. The Brownton Community Garden Committee, Public Health, Brownton elected officials and residents are excited to see the opportunities the community garden brings for years to come.







## OUR TEAM

## Building On Success

We are thankful for all of our previous and current partners as we would not be successful in providing opportunities for our community to live longer, healthier lives without their support. If you would like to know more information about SHIP, please contact either Pam Bagley or Brett Nelson. We have exciting, new projects already developing and can't wait to share our successes in the future.

**MN Moves**

**MN Eats**

**MN Commercial Tobacco Free**

**MN Well-being**

## Contact us

**Pam  
Bagley**



[pam.bagley@co.meeker.mn.us](mailto:pam.bagley@co.meeker.mn.us)

**Jayme  
Krauth**



[jayme.krauth@co.mcleod.mn.us](mailto:jayme.krauth@co.mcleod.mn.us)

**Vlada  
Gladis**



[vladagladis@co.sibley.mn.us](mailto:vladagladis@co.sibley.mn.us)

**Brett  
Nelson**



[brett.nelson@mmspublichealth.org](mailto:brett.nelson@mmspublichealth.org)



**Public Health**  
Prevent. Promote. Protect.

**Meeker McLeod Sibley**  
Community Health Services

# Meeker-McLeod-Sibley Community Health Services

114 N Holcombe Ave, Litchfield, Minnesota 55355  
Main Line (320)693-5370

March 9, 2023

Business Office Manager Update,

This month marks the 9<sup>th</sup> month of my employment with Meeker-McLeod-Sibley Community Health Services (MMS CHS). In this time, I have learned a world of information and processes. I have built relationships with coworkers, learned audit processes and have been part of the Workforce Development team, PMQI team and Reaccreditation work. All the staff have been incredibly welcoming and willing to answer my questions and teach new processes.

In the past 9 months the fiscal team has continued its routine work with grant reporting. Some of the grants require monthly reporting while other grants require quarterly. Some grants require all invoices and ledgers sent with while others require just the transposition of numbers to another form. We are currently working on our annual Local Public Health Act reporting as an agency. This report requires us to look in to our expenditures and our current staffing levels. We also have gotten the opportunity to start a new grant this past quarter; Health Equity. Although it will be a short-lived grant, it still required the same amount of setup. We created a new fiscal workbook and a new code for staff to use within PHDoc to track their time while working within it.

I was able to be part of the audit process shortly after I started. As previously mentioned, this turned out well for us with just one minor item that needed attention.

As you all know my position is 50% fiscal and 50% Workforce Development. I have had great pleasure working with various team members in developing our workforce. This has included planning our all staff training days, working with our MDH Nurse Consultant in a planning day, working with outside speakers to come present to our staff and most recently working with the team to start planning trainings for the community. The reaccreditation work that I have done also ties into the Workforce Development projects that I have worked on. I have also been involved in Process Management Quality Improvement (PMQI) restart. This has entailed creating charts and documents for staff to use to track their grant work and any improvements they may chose to work on.

When I had my first child I was a participant of the WIC program. I never thought one day that I would on the flip side of life now working, in a way, with the program. I never knew what all Public Health did for our community until my employment. It has been an honor to work here and to see what the three counties and the CHS does to support all those within our communities.

I look forward too many more years making a difference,

*Sarah Gassman*

**Meeker County**  
114 N Holcombe Ave #250  
Litchfield, MN 55355  
(320) 693-5370

**McLeod County**  
520 Chandler Ave North  
Glencoe, MN 55336  
(320) 864-3185

**Sibley County**  
111 8<sup>th</sup> Street; PO Box 237  
Gaylord, MN 55334  
(507) 237-4000

